

*Wallpaper
Collection*

Devon & Devon

Devon&Devon

CREATED IN FLORENCE. INSPIRED BY THE WORLD.

WALLPAPER COLLECTION

DD

2017

I N D E X

P.5 ABOUT

P.6 WALLPAPER COLLECTION

P.61 WALLPAPER TECHNICAL SHEETS

P.63 NINA FARRÉ

ARABESQ
BLUE TILES
FONDU
SAMODE
SAMODE NEGA
TAPISSERIE

P.64
P.65
P.66
P.67
P.68
P.69

P.71 FRANCESCA GRECO

BIRDS
CARDOON
RAINFOREST
COROLLA
LILIES
PLUMES
GINKO
IVY

P.72
P.73
P.74
P.75
P.76
P.77
P.78
P.80

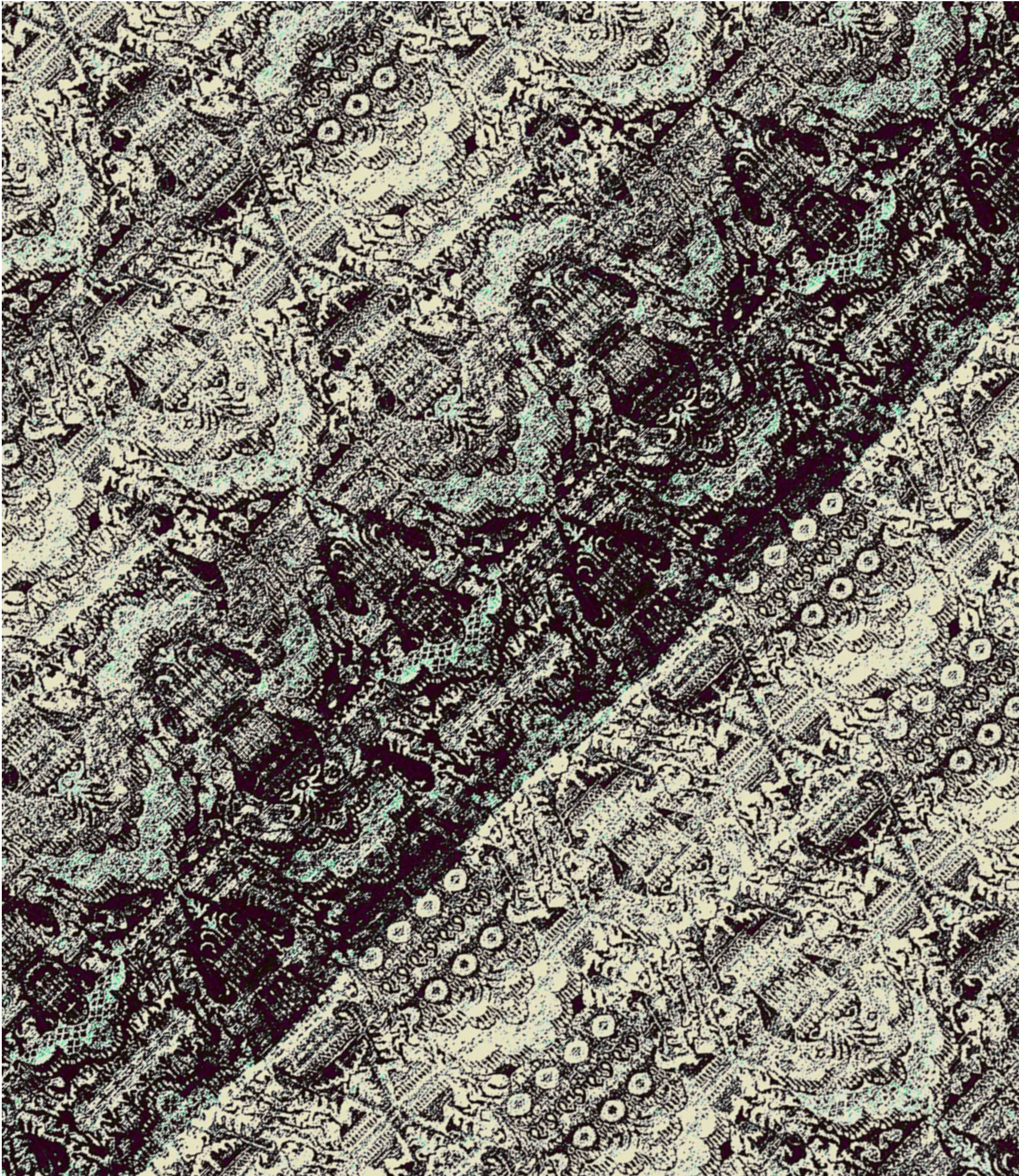
P.83 VITO NESTA

BROADWAY
EMPIRE
MAJESTIC
PARADISEA
SAMOA
BOTANICA
CASABLANCA
COSTARICA
GIACARTA
LEAF
BAMBOO
CHAIN
KNOT
NAPPINE
RIO
VANDEVELDE
VERSACRUM
WAGNER

P.84
P.85
P.86
P.87
P.88
P.89
P.90
P.91
P.92
P.93
P.94
P.95
P.96
P.97
P.98
P.99
P.100
P.101

P.102 PRICE LIST

P.104 GENERAL TECHNICAL
SPECIFICATIONS



A B O U T

DD

Devon&Devon presenta Wallpaper Collection, realizzata in collaborazione con i designer Francesca Greco, Nina Farré e Vito Nesta.

Una proposta originale, elegante, ricca e versatile, in perfetta sintonia con la filosofia del brand, pensata per decorare case private, progetti residenziali e ricercati boutique hotels.

La Devon&Devon Wallpaper Collection si adatta con equilibrio a molteplici contesti, suggerendo rigorose ambientazioni classiche o squisitamente eclettiche.

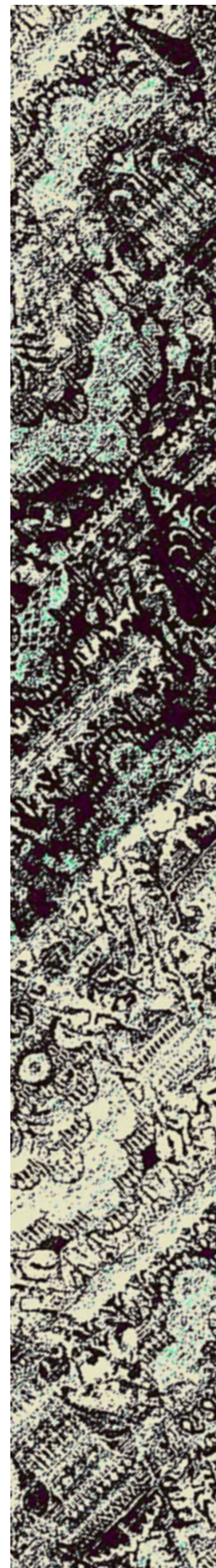
I temi scelti sono 32 e spaziano da motivi geometrici - dagli effetti tridimensionali e optical - a motivi di ispirazione Art Déco, passando poi per motivi orientali ed arabescati, fino a soggetti floreali e animalier, iper-colorati e surreali. E poi ancora, pesci d'oro, paesaggi onirici e tessuti retrò, perfetti per atmosfere ricercate dal fascino senza tempo.

Devon&Devon presents Wallpaper Collection, produced in cooperation with designers Francesca Greco, Nina Farré and Vito Nesta.

Created to decorate private houses, residential projects and exclusive boutique hotels, this original, elegant and versatile proposal is perfectly aligned with the philosophy of the brand.

The Devon&Devon Wallpaper Collection adapts seamlessly to a wide variety of different contexts, suggesting interior ambiances from the classical to the exquisitely eclectic.

The 32 themes selected range from geometrical motifs to three-dimensional and optical effects, to motifs inspired by Art Deco, together with oriental and arabesque patterns, including brightly-coloured and surreal floral and animalier motifs. In addition, imagery includes goldfish, dreamlike landscapes and retro fabrics, all perfect for designing fascinating, eclectic and timeless atmospheres.







FRANCESCA GRECO - CARDOON 3





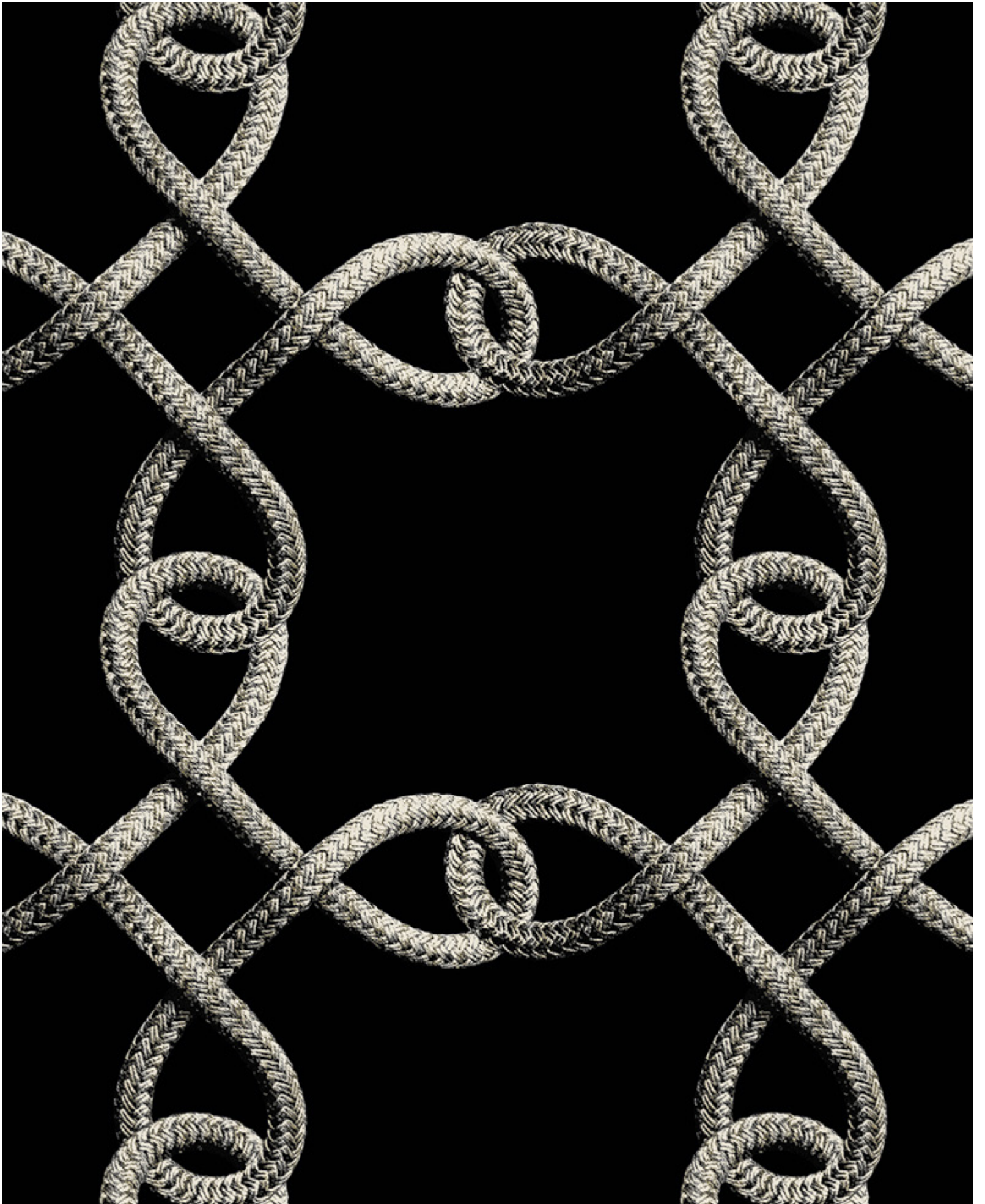
VITO NESTA - COSTARICA WINE













VITO NESTA - KNOT WHITE&BLACK





NINA FARRÉ - TAPISSERIE BLACK





VITO NESTA - BOTANICA GREY

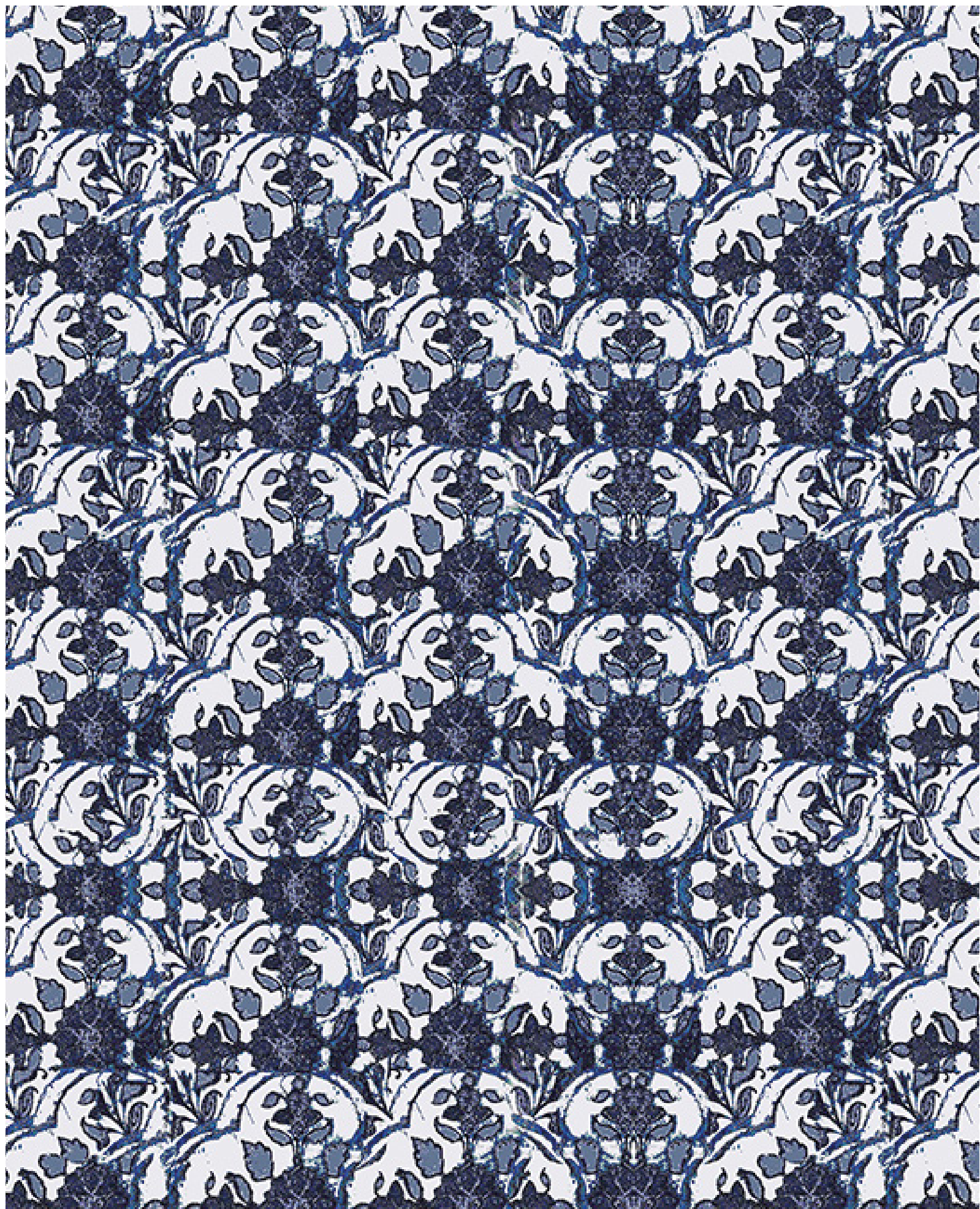








VITO NESTA - SAMOA BLACK&WHITE













VITO NESTA - NAPPINE RED







FRANCESCA GRECO - RAINFOREST 3











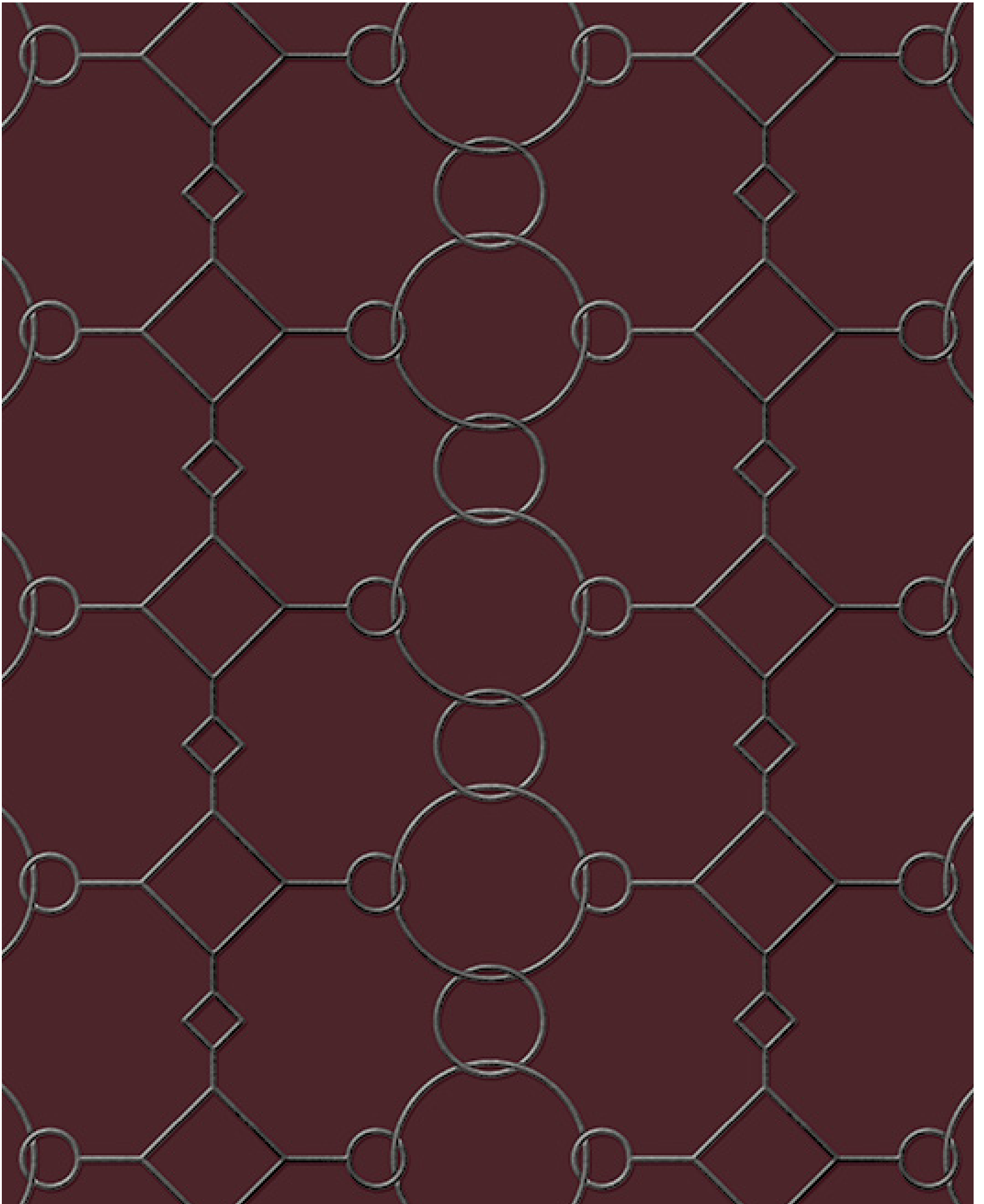


VITO NESTA - BAMBOO BLACK











VITO NESTA - CHAIN RED





NINA FARRÉ - BLUE TILES BORDEAUX

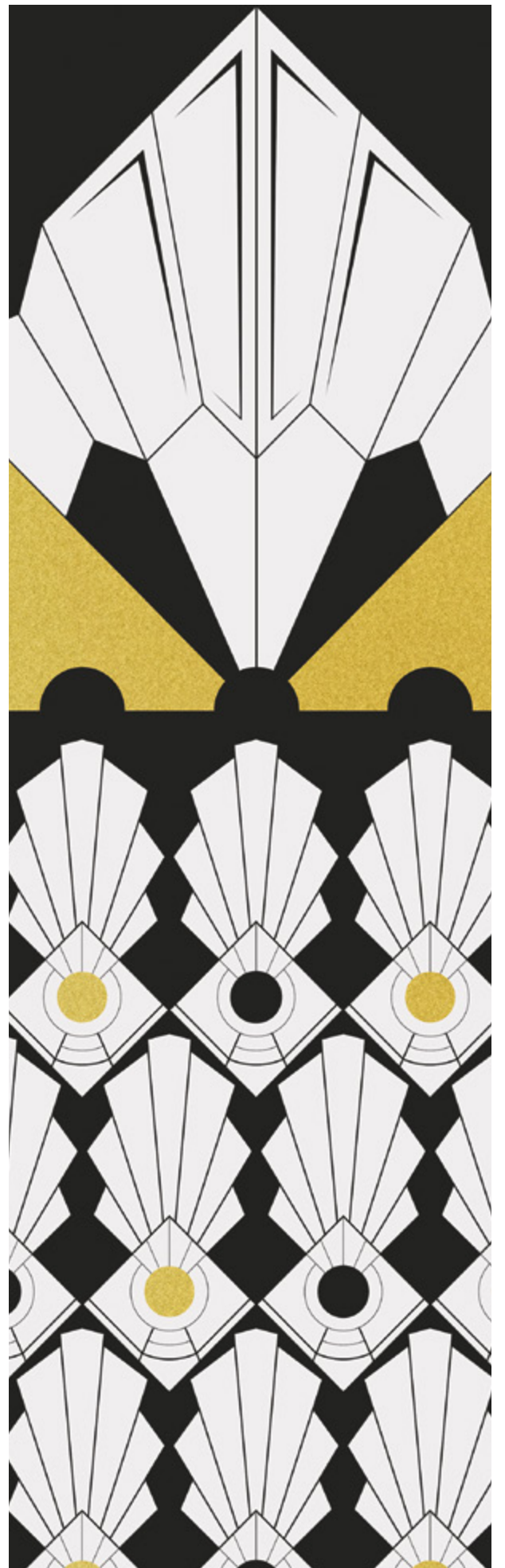


VITO NESTA - BROADWAY BLACK



AURORA BIJOUX BATHTUB - PRESTIGE 7 MARBLE FLOORING





VITO NESTA - MAJESTIC GOLD





VITO NESTA - PARADISEA SOFT



NINA FARRÉ - SAMODE NEGA BEIGE



VITO NESTA - RIO GOLD









VITO NESTA - WAGNER ICE





WALLPAPER
TECHNICAL SHEETS

DD



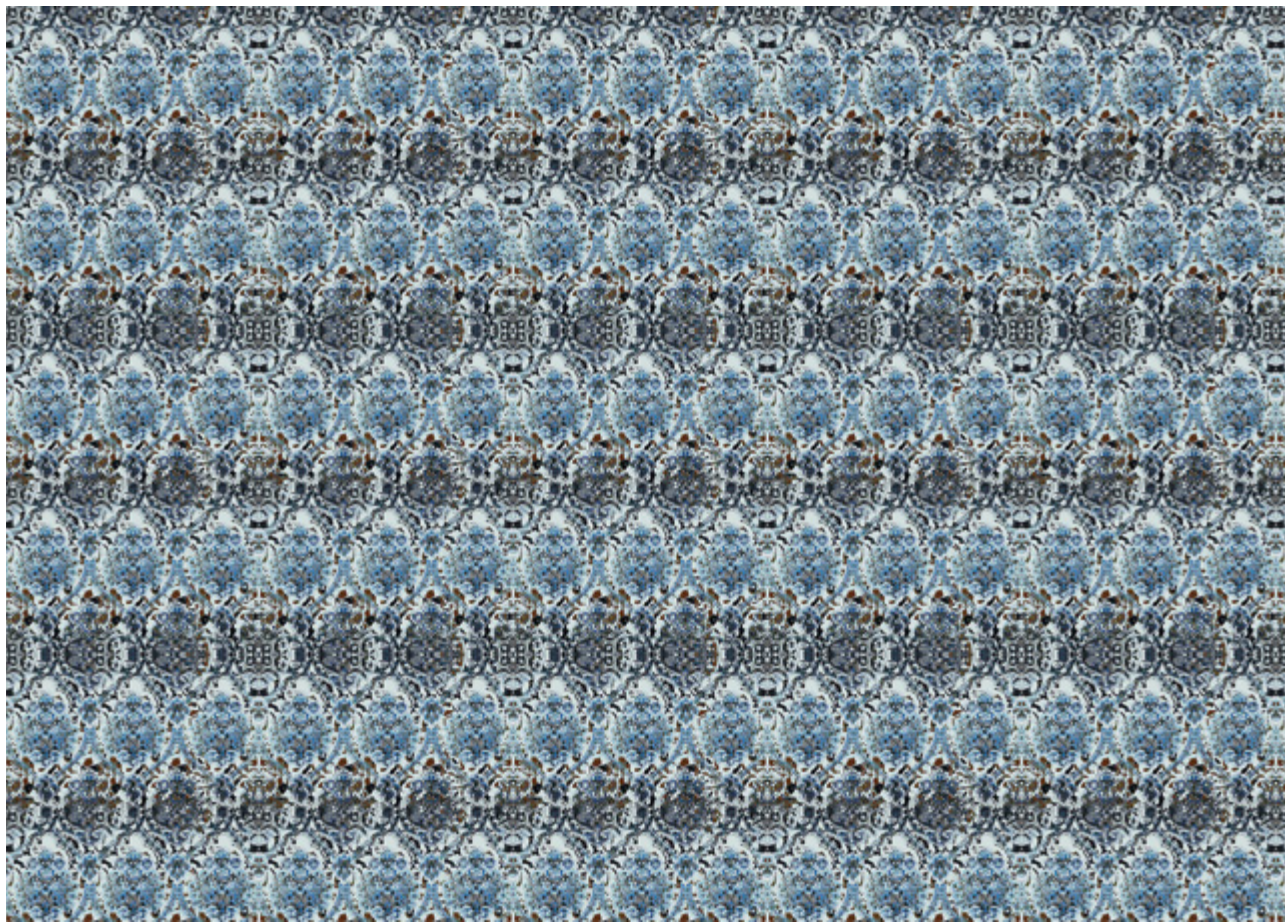


NINA FARRÉ

ARABESQ
BLUE TILES
FONDU
SAMODE
SAMODE NEGA
TAPISSERIE



cm47



cm 300

ARABESQ BLUE

1:50

cm47



ARABESQ FUSHIA

1:10



ARABESQ GREY

1:10

cm60

NINA
FARRÉ
ARABESQ

ARABESQ BLUE
NFARAB

ARABESQ FUSHIA
NFARAF

ARABESQ GREY
NFARAG

ARABESQ KAKI
NFARAK



ARABESQ KAKI

1:10



BLUE TILES BEIGE ROSE

1:50

NINA
FARRÉ
BLUE TILES

BLUE TILES BEIGE ROSE
NFBLUBR

BLUE TILES BORDEAUX
NFBLUB

BLUE TILES GREY
NFBLUG

BLUE TILES OCRE
NFBLUO

BLUE TILES OLD PINK
NFBLUOP



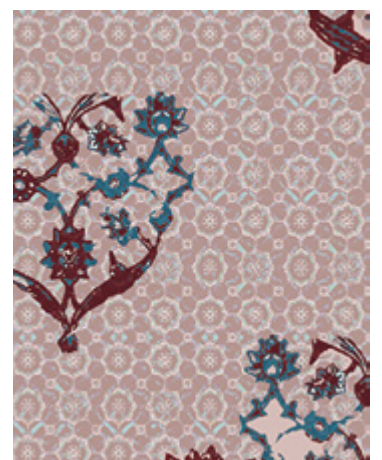
BLUE TILES BORDEAUX 1:10



BLUE TILES GREY 1:10

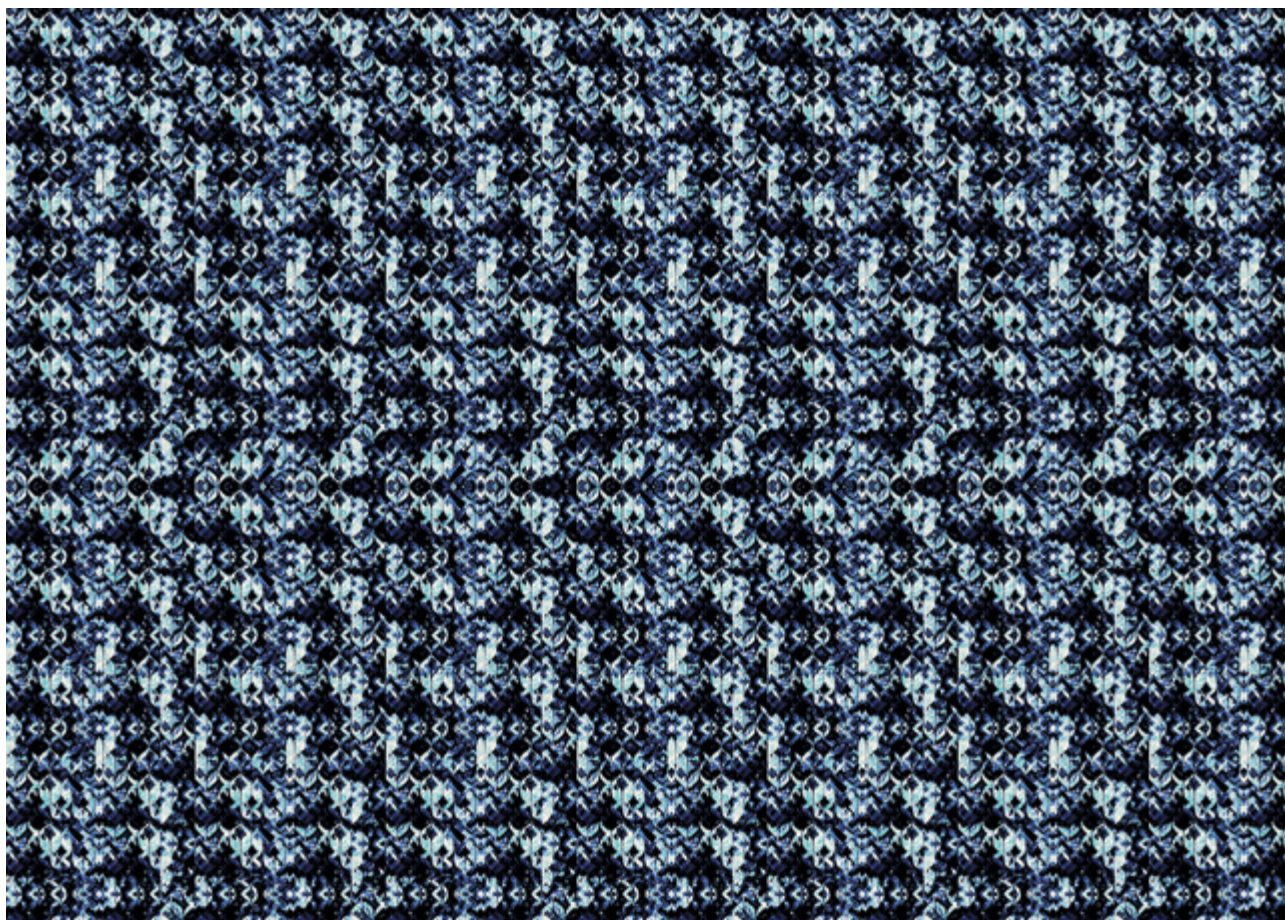


BLUE TILES OCRE 1:10



BLUE TILES OLD PINK 1:10

cm47



cm 300

FONDU BLUE

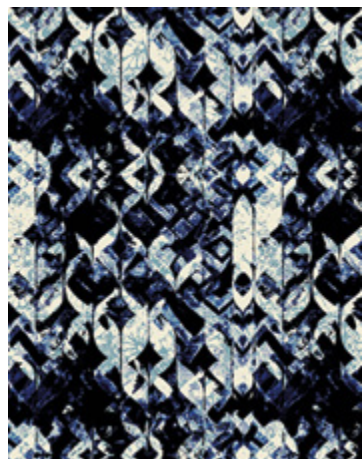
1:50

cm47



FONDU BORDEAUX

1:10



FONDU DARK BLUE

1:10

cm60



FONDU OCRE

1:10



FONDU RED

1:10

NINA
FARRÉ

FONDU

FONDU BLUE

NFFONBL

FONDU BORDEAUX

NFFONB

FONDU DARK BLUE

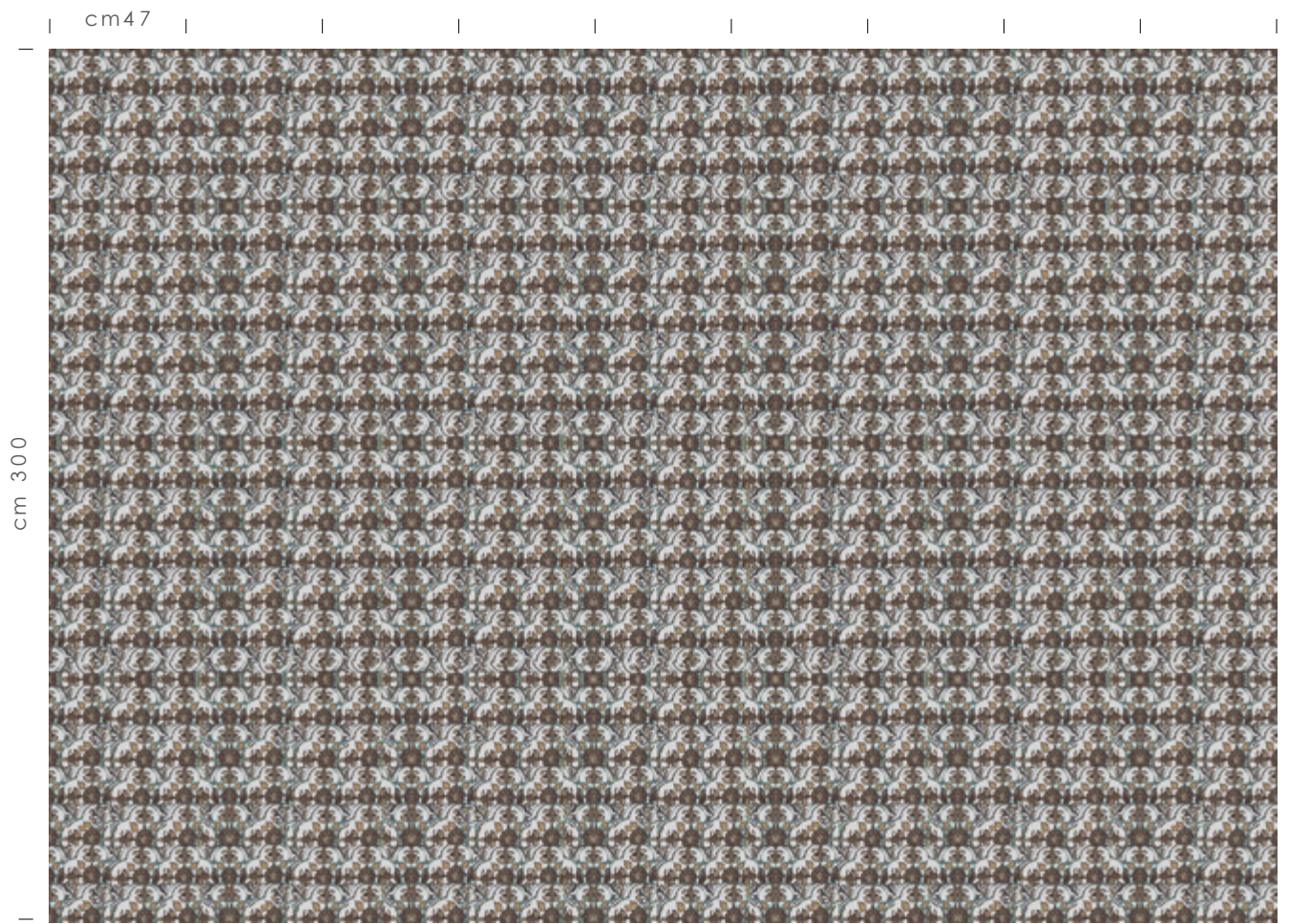
NFFOND

FONDU OCRE

NFFONO

FONDU RED

NFFONR



SAMODE BEIGE GRIS

1:50

NINA
FARRÉ
SAMODE

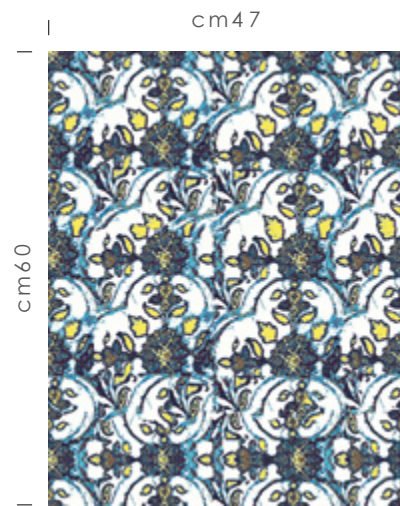
SAMODE BEIGE GRIS
NFSAMBG

SAMODE BLUE
NFSAMB

SAMODE LAVANDE
NFSAML

SAMODE NOIR&BLANC
NFSAMN

SAMODE YELLOW
NFSAMY



SAMODE BLUE

1:10



SAMODE LAVANDE

1:10



SAMODE NOIR&BLANC

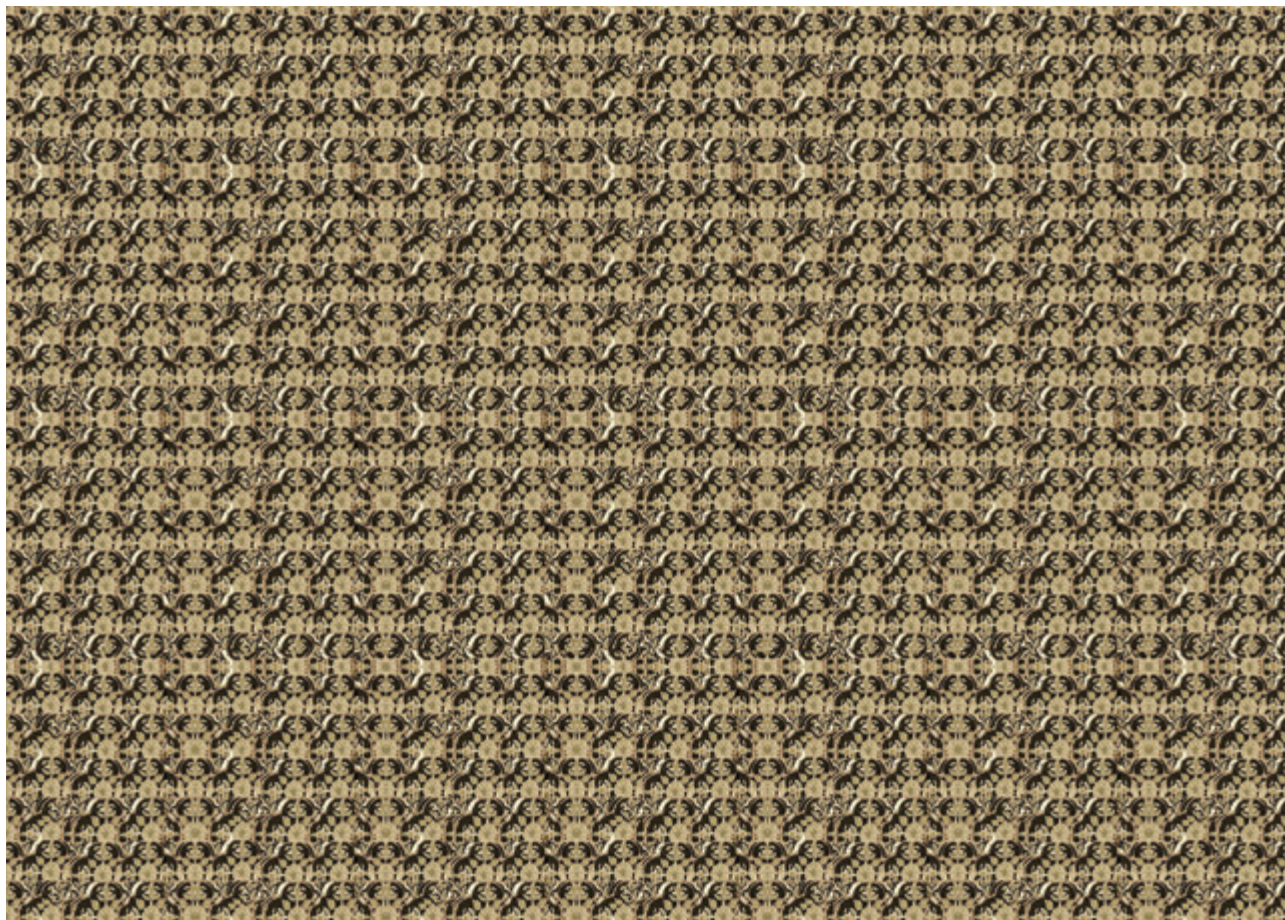
1:10



SAMODE YELLOW

1:10

cm47



cm 300

SAMODE NEGA BEIGE

1:50

cm47



SAMODE NEGA NAVY BLUE 1:10



SAMODE NEGA PINK 1:10

cm60



SAMODE NEGA RED 1:10



SAMODE NEGA YELLOW 1:10

NINA
FARRÉ

SAMODE NEGA

SAMODE NEGA BEIGE

NFSAMNB

SAMODE NEGA NAVY BLUE

NFSAMNN

SAMODE NEGA PINK

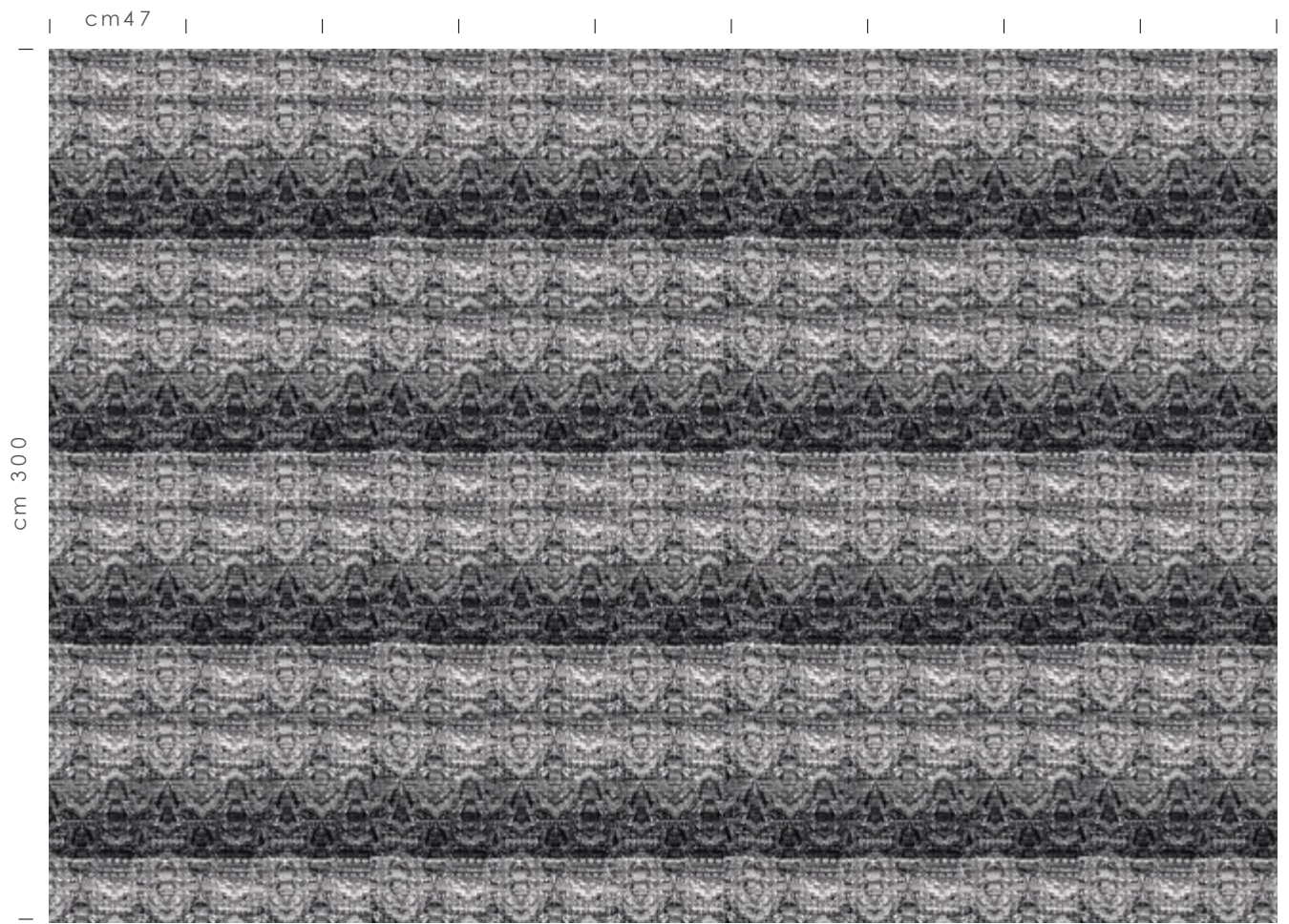
NFSAMNP

SAMODE NEGA RED

NFSAMNR

SAMODE NEGA YELLOW

NFSAMNY



TAPISSERIE BLACK

1:50

NINA
FARRÉ
TAPISSERIE

TAPISSERIE BLACK
NFTAPBL

TAPISSERIE BORDEAUX
NFTAPB

TAPISSERIE GOLD
NFTAPG

TAPISSERIE GREY BLUE
NFTAPGB

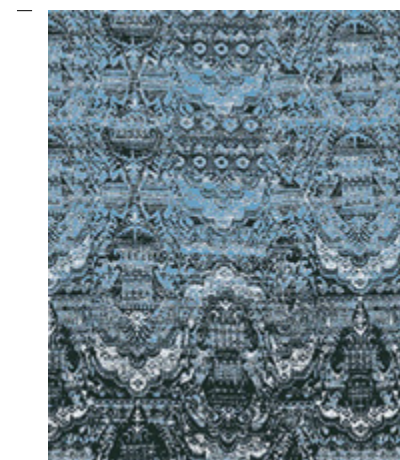
TAPISSERIE RED
NFTAPR



TAPISSERIE BORDEAUX 1:10



TAPISSERIE GOLD 1:10



TAPISSERIE GREY BLUE 1:10



TAPISSERIE RED 1:10



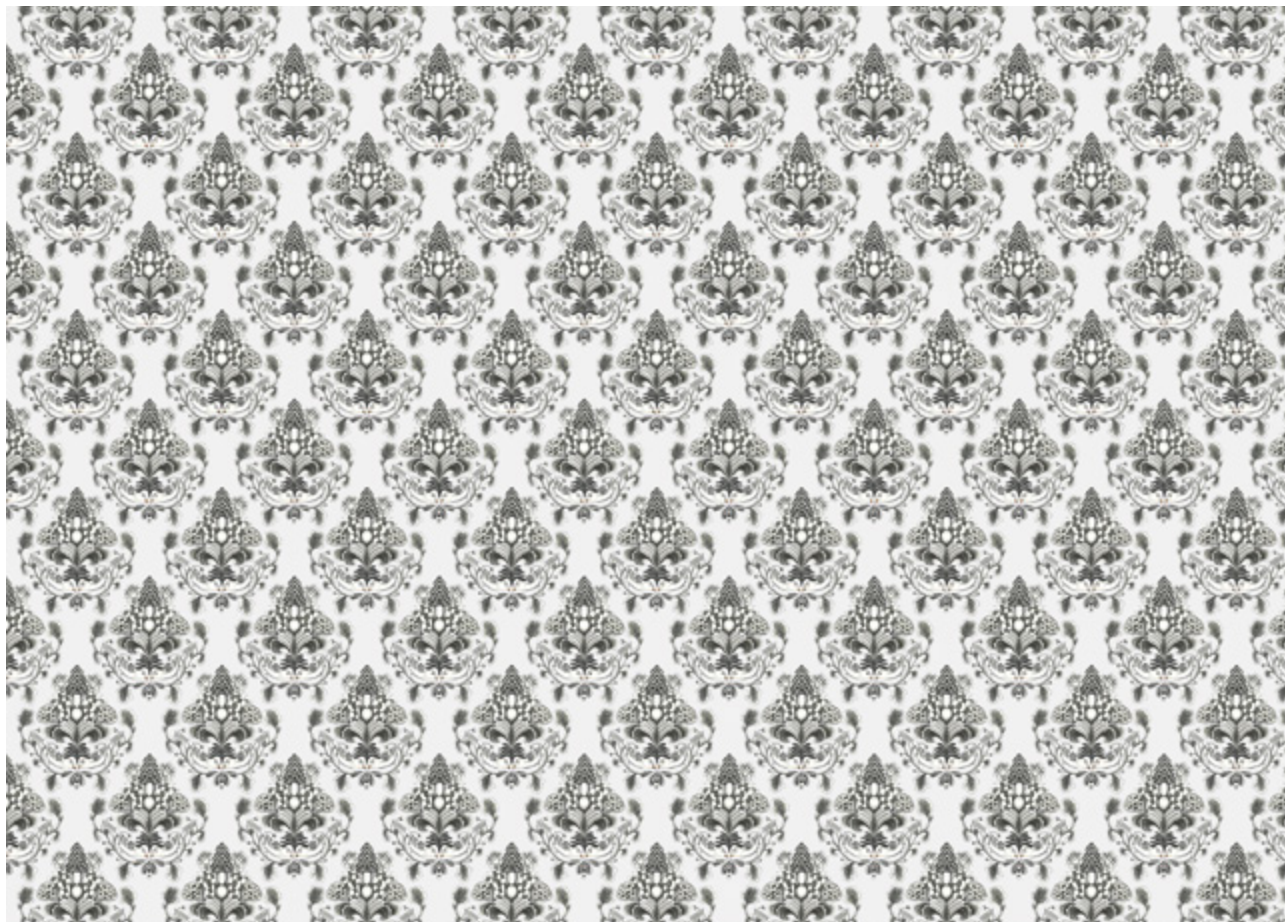


FRANCESCA GRECO

BIRDS
CARDOON
RAINFOREST
COROLLA
LILIES
PLUMES
GINKO
IVY



cm47



cm 300

BIRDS 1

1:50

cm47



BIRDS 2

1:10



BIRDS 3

1:10

cm60



BIRDS 4

1:10

FRANCESCA GRECO

BIRDS

BIRDS 1

FGBIR1

BIRDS 2

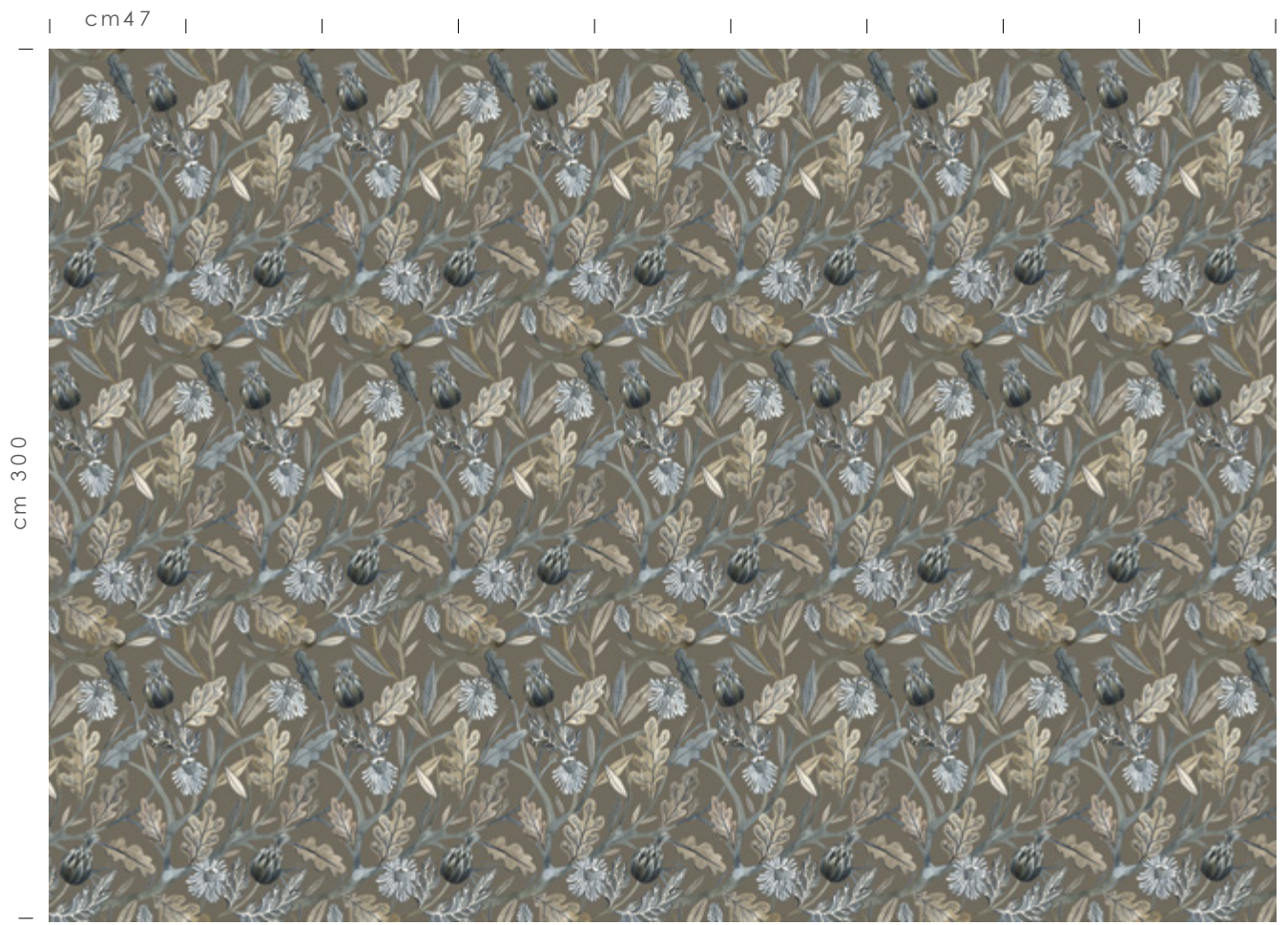
FGBIR2

BIRDS 3

FGBIR3

BIRDS 4

FGBIR4



CARDOON 1

1:50

FRANCESCA
GRECO
CARDOON

CARDOON 1
FGCAR1

CARDOON 2
FGCAR2

CARDOON 3
FGCAR3



CARDOON 2

1:10



CARDOON 3

1:10

cm47



cm 300

RAINFOREST 1

1:50

cm47



RAINFOREST 2

1:10



RAINFOREST 3

1:10

cm60



RAINFOREST 4

1:10

FRANCESCA
GRECO

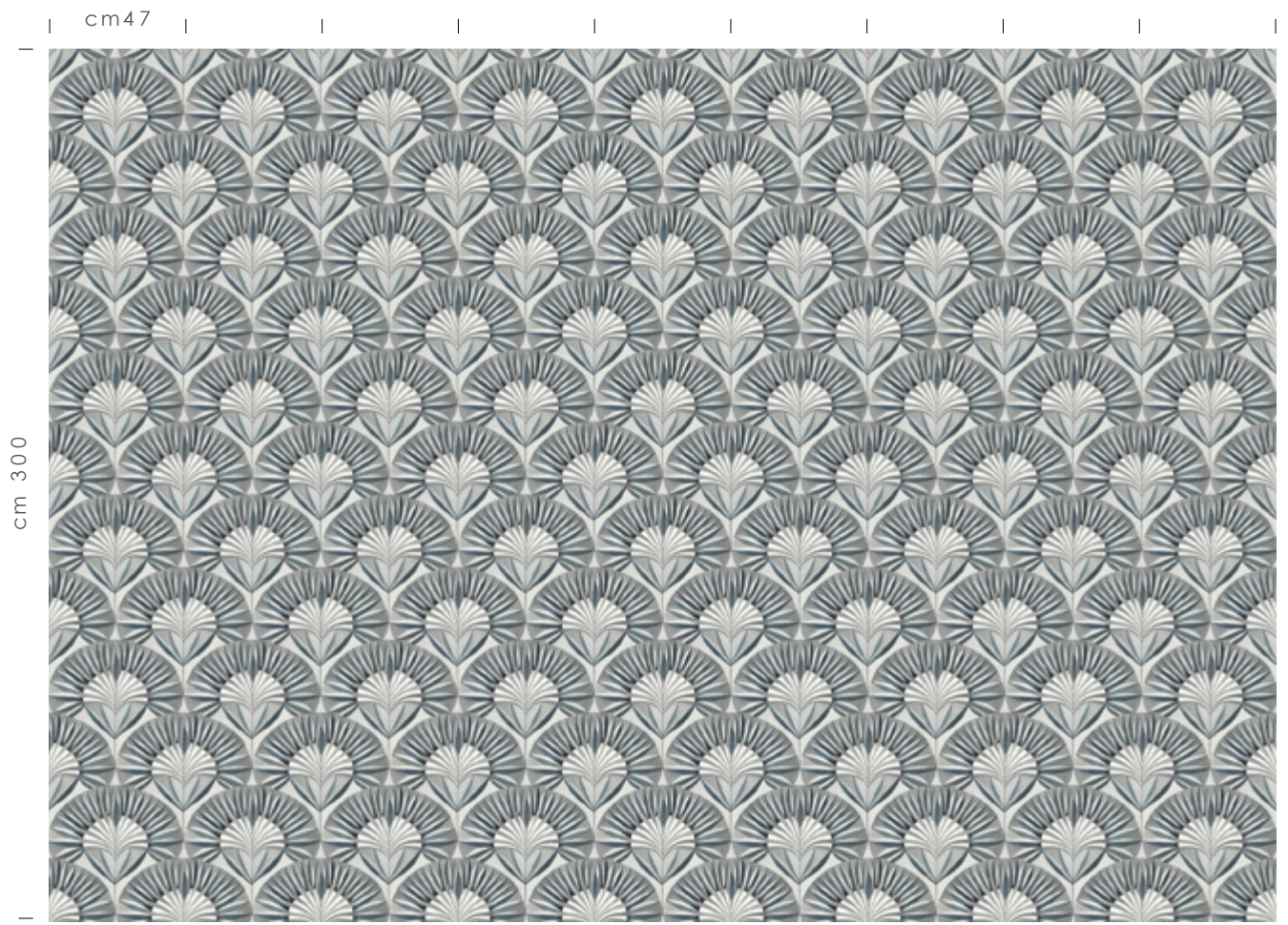
RAINFOREST

RAINFOREST 1
FGRA11

RAINFOREST 2
FGRA12

RAINFOREST 3
FGRA13

RAINFOREST 4
FGRA14



COROLLA 1

1:50

FRANCESCA
GRECO
COROLLA

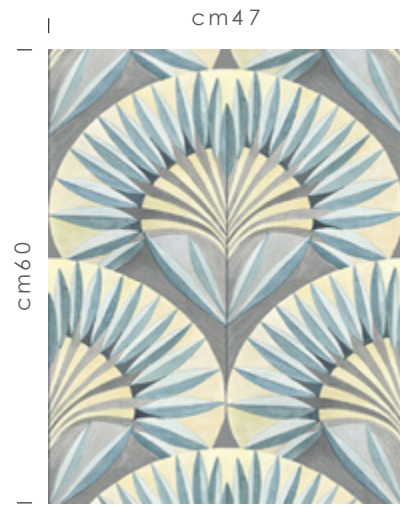
COROLLA 1
FGCOR1

COROLLA 2
FGCOR2

COROLLA 3
FGCOR3

COROLLA 4
FGCOR4

COROLLA 5
FGCOR5



COROLLA 2

1:10



COROLLA 3

1:10



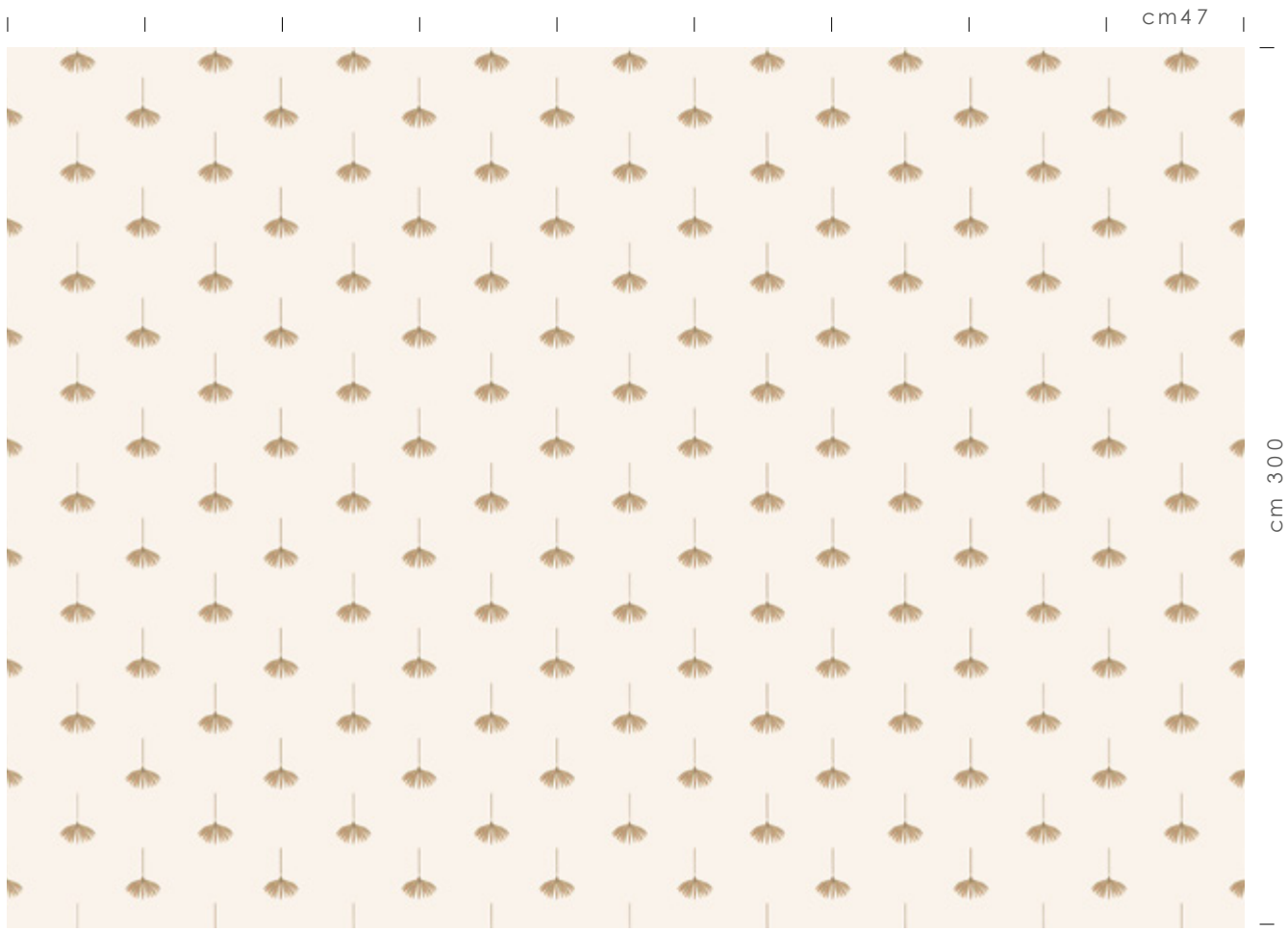
COROLLA 4

1:10



COROLLA 5

1:10



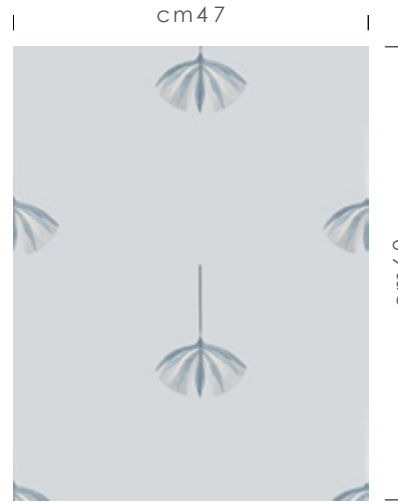
LILIES 1

1:50



LILIES 2

1:10



LILIES 3

1:10



LILIES 4

1:10

FRANCESCA
GRECO
LILIES

LILIES 1
FGLIL1

LILIES 2
FGLIL2

LILIES 3
FGLIL3

LILIES 4
FGLIL4



PLUMES 1

1:50

FRANCESCA
GRECO
PLUMES

PLUMES 1
FGPLU1

PLUMES 2
FGPLU2

PLUMES 3
FGPLU3



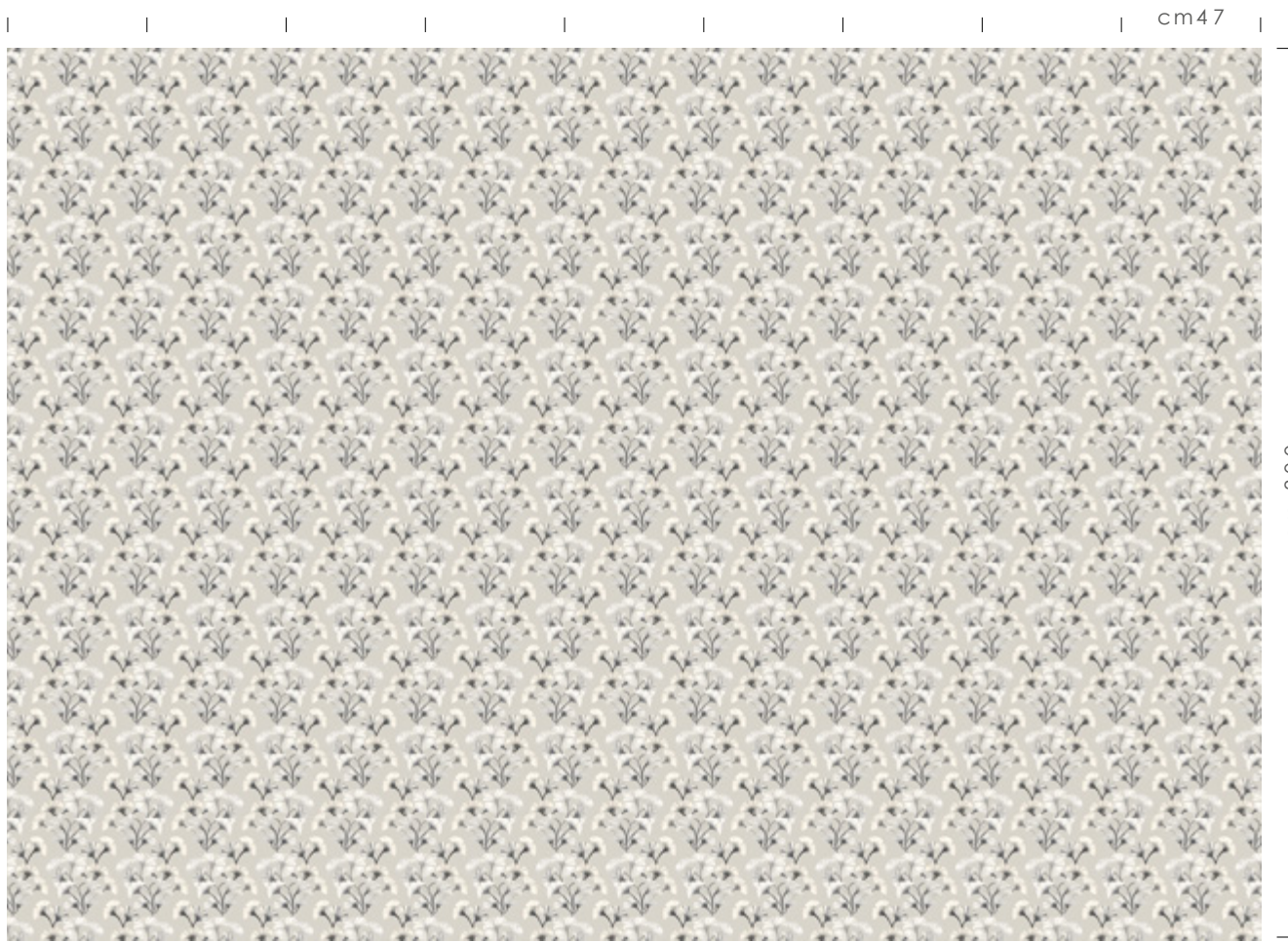
PLUMES 2

1:10



PLUMES 3

1:10



GINKO 1

1:50



GINKO 2

1:10



GINKO 3

1:10



GINKO 4

1:10



GINKO 5

1:10

FRANCESCA
GRECO
GINKO

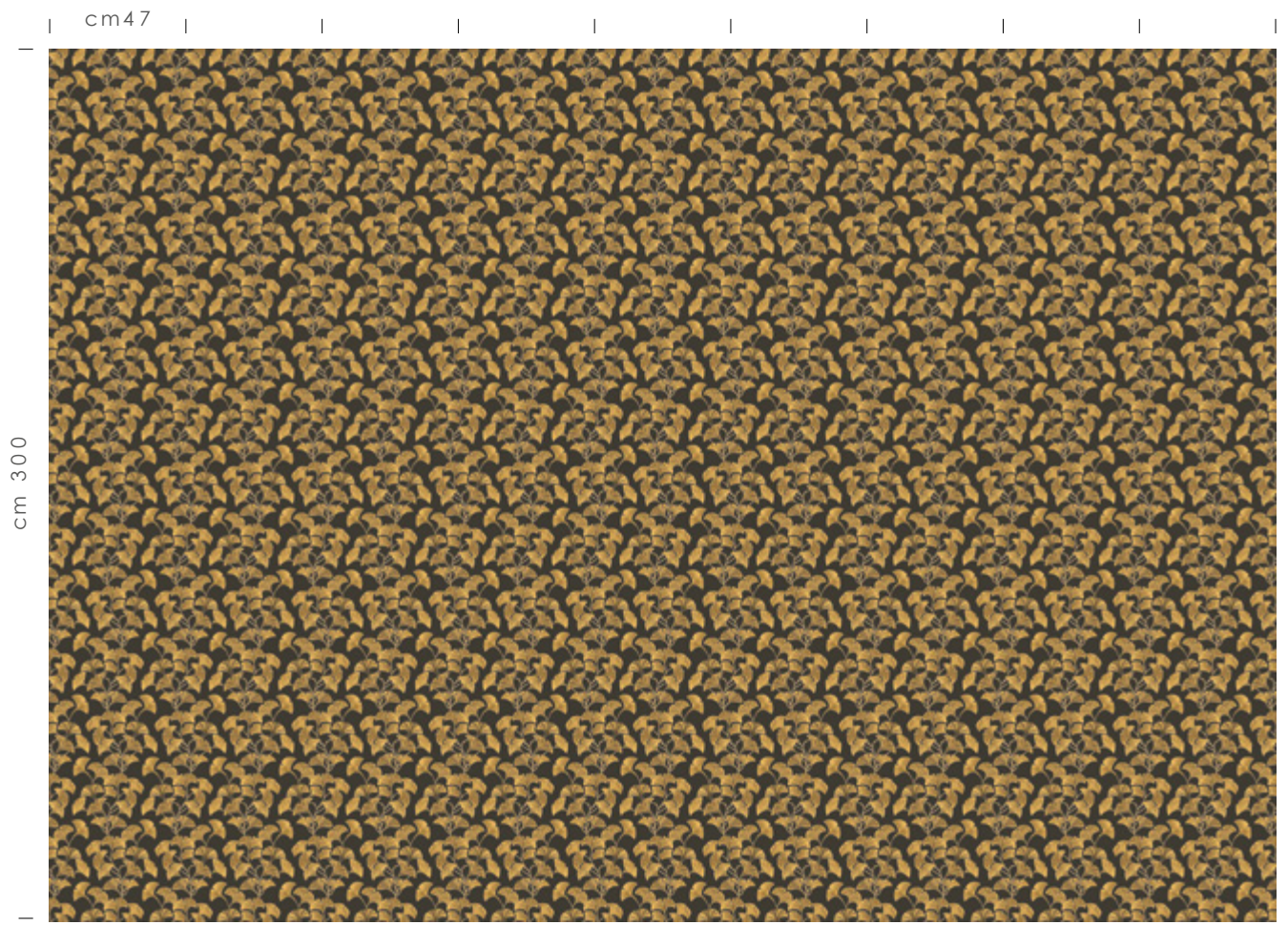
GINKO 1
FGGIN1

GINKO 2
FGGIN2

GINKO 3
FGGIN3

GINKO 4
FGGIN4

GINKO 5
FGGIN5



GINKO 6

1:50

FRANCESCA
GRECO
GINKO

GINKO 6
FGGIN6

GINKO 7
FGGIN7

GINKO 8
FGGIN8

GINKO 9
FGGIN9

GINKO 10
FGGIN10



GINKO 7

1:10



GINKO 8

1:10



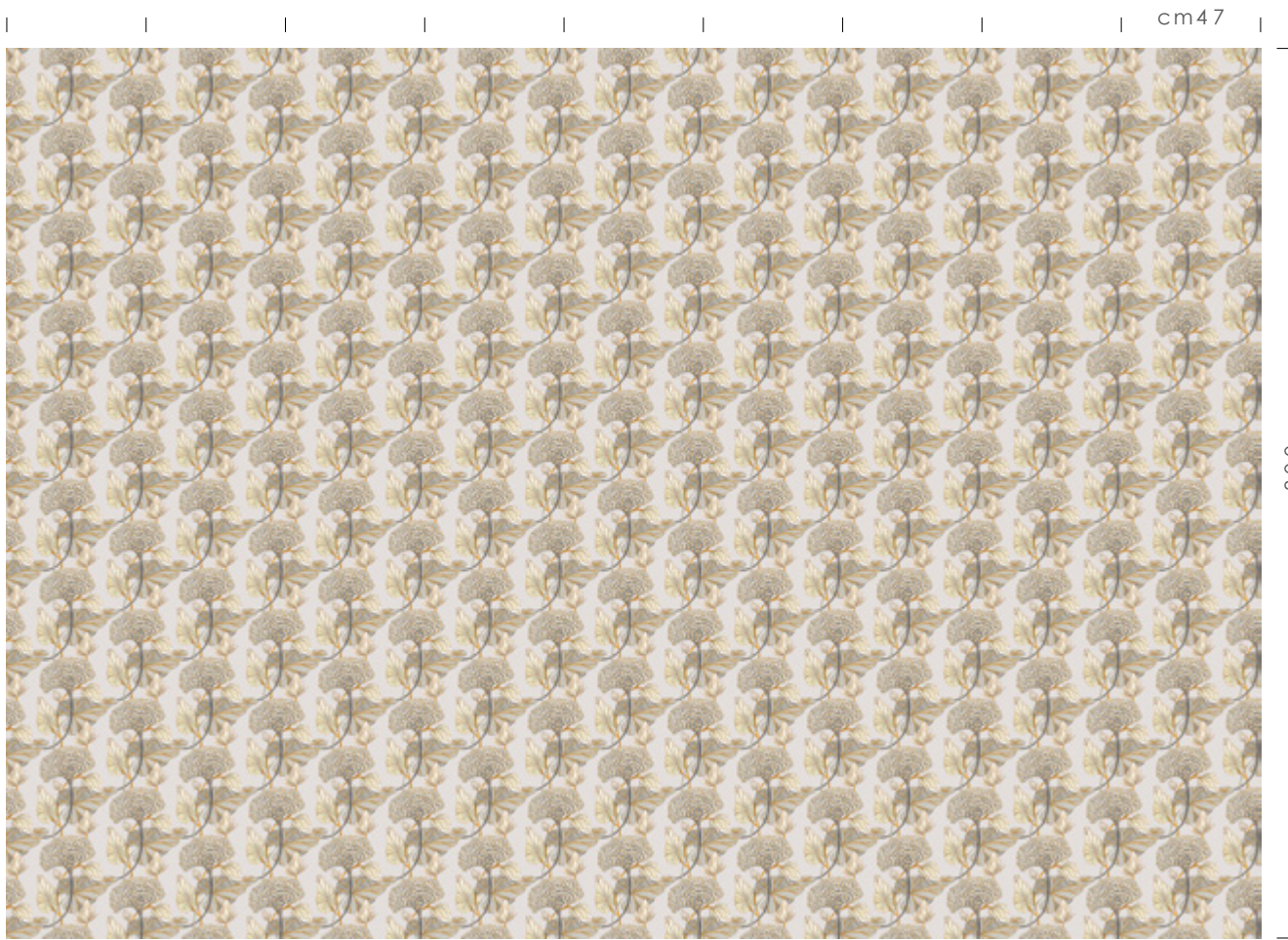
GINKO 9

1:10



GINKO 10

1:10



IVY 1

1:50



IVY 2

1:10



IVY 3

1:10

FRANCESCA
GRECO
IVY

IVY 1
FGIVY1

IVY 2
FGIVY2

IVY 3
FGIVY3







VITO NESTA

BROADWAY
EMPIRE
MAJESTIC
PARADISEA
SAMOA
BOTANICA
CASABLANCA
COSTARICA
GIACARTA
LEAF
BAMBOO
CHAIN
KNOT
NAPPINE
RIO
VANDELDELDE
VERSACRUM
WAGNER



cm47



cm 400

BROADWAY BLACK

1:50

VITO
NESTA
BROADWAY

BROADWAY BLACK
VNBROB

BROADWAY GREY
VNBROG

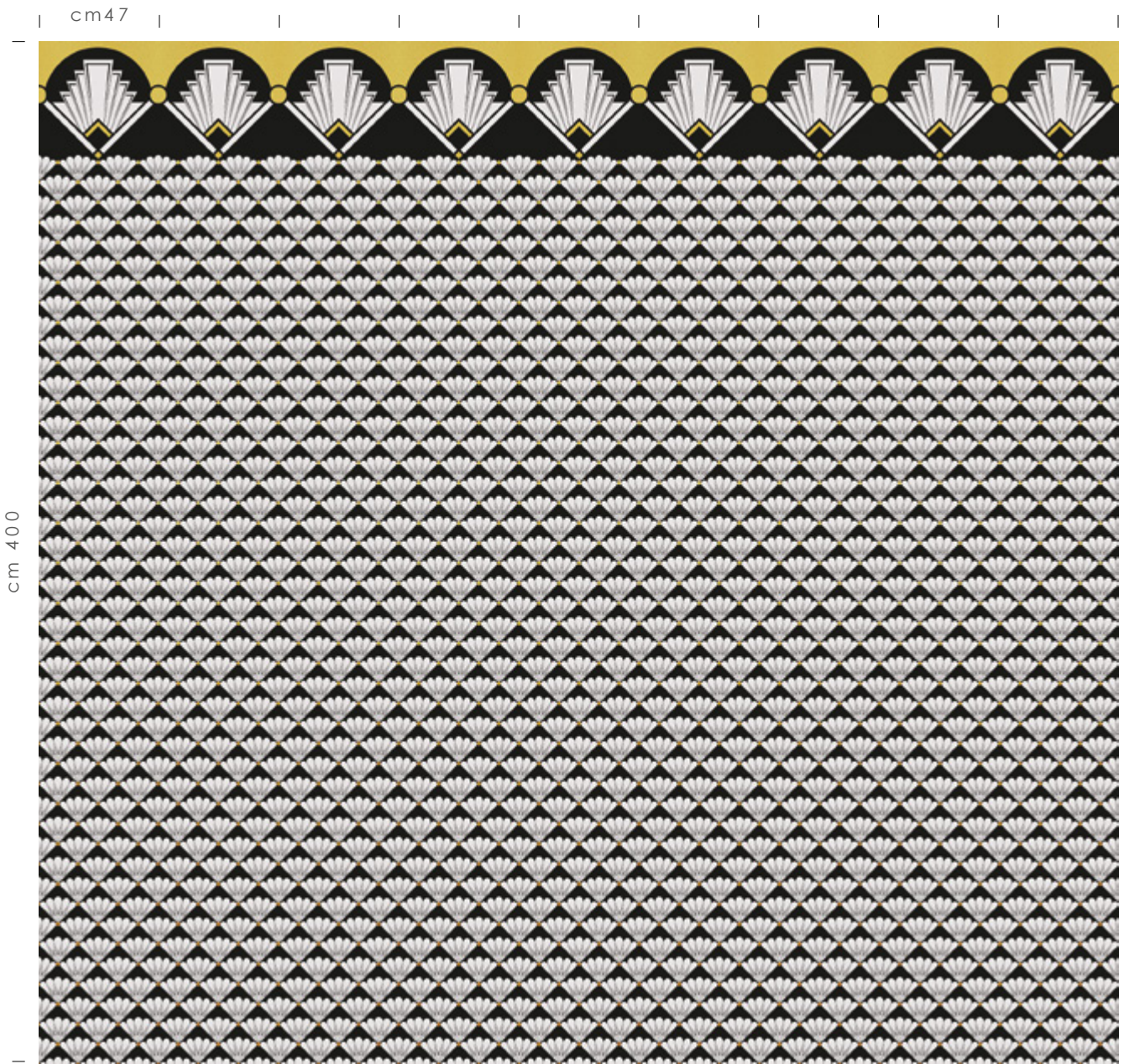
cm47



cm60

BROADWAY GREY

1:10



cm 400

cm47

VITO
NESTA
EMPIRE

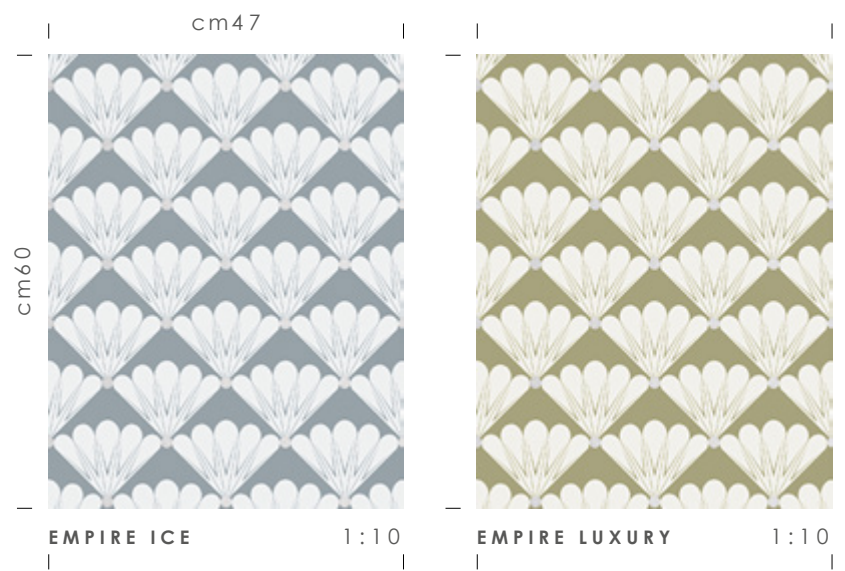
EMPIRE BLACK&WHITE
VNEMPB

EMPIRE ICE
VNEMPI

EMPIRE LUXURY
VNEMPL

EMPIRE BLACK&WHITE

1:50



cm47

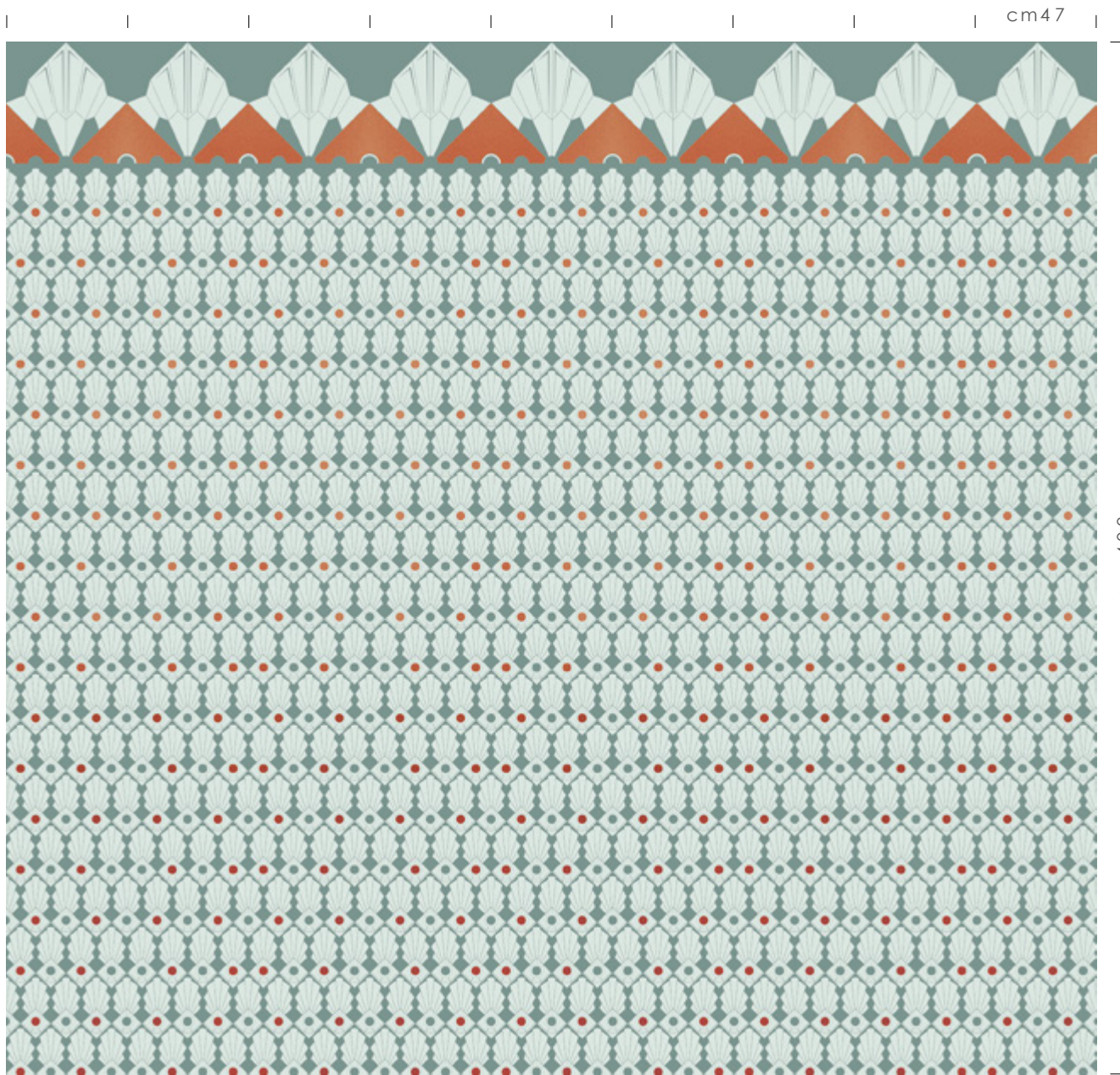
cm60

EMPIRE ICE

1:10

EMPIRE LUXURY

1:10



MAJESTIC COPPER

1:50

VITO
NESTA
MAJESTIC

MAJESTIC COPPER
VNMAJC

MAJESTIC GOLD
VNMAJG

MAJESTIC WINTER
VNMAJW



MAJESTIC GOLD

1:10

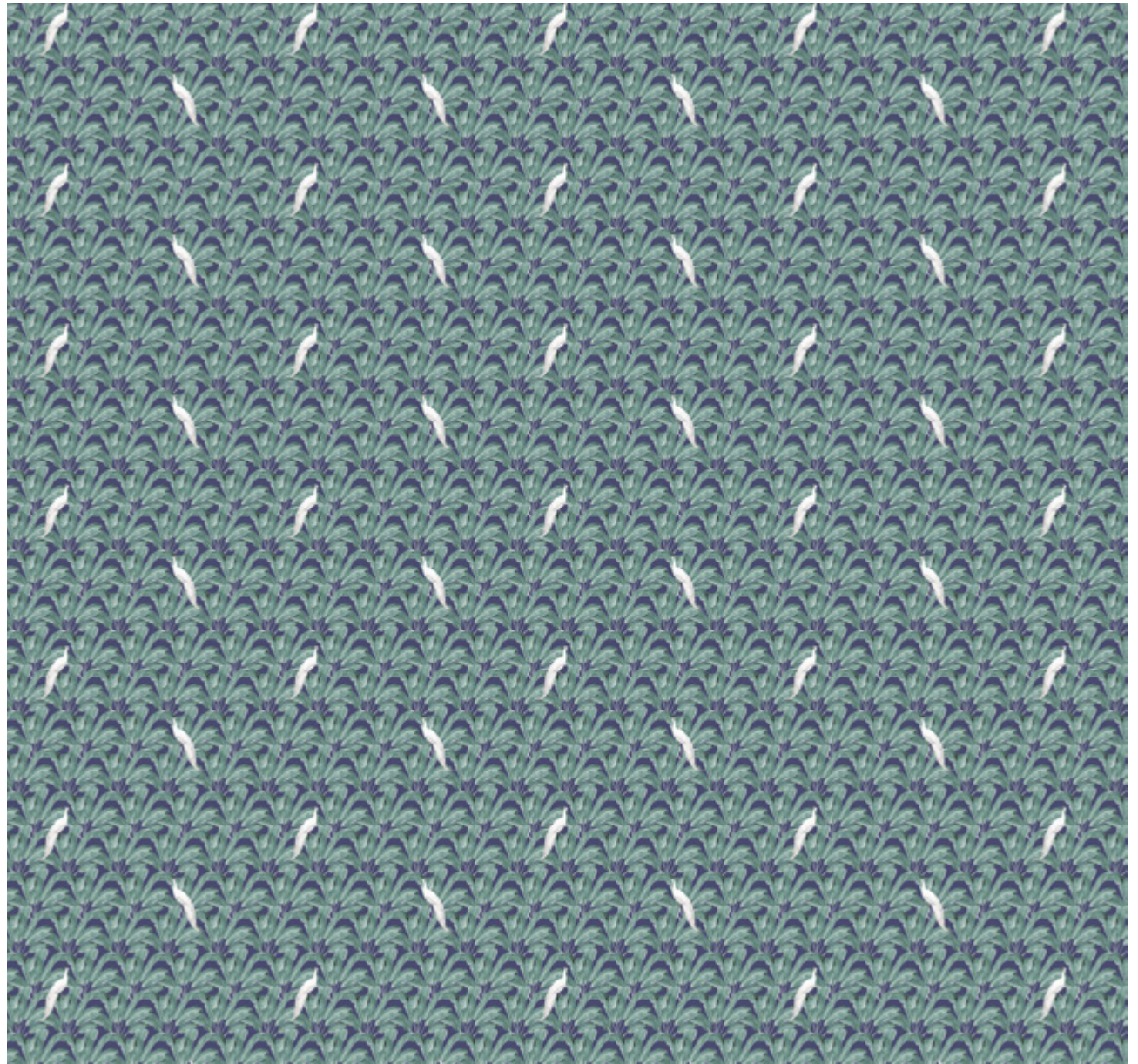


MAJESTIC WINTER

1:10

cm47

cm 400



VITO
NESTA
PARADISEA

PARADISEA GREEN
VNPARG

PARADISEA RED
VNPARR

PARADISEA SOFT
VNPARS

PARADISEA GREEN

1:50

cm47

cm60



PARADISEA RED

1:10



PARADISEA SOFT

1:10

cm47



cm 400

SAMOA BLACK&WHITE

1:50

VITO
NESTA
SAMOA

SAMOA BLACK&WHITE
VNSAMB

SAMOA GOLD
VNSAMG

SAMOA RED
VNSAMR

cm47



SAMOA GOLD

1:10



SAMOA RED

1:10

cm60

cm47

cm 400



BOTANICA BLACK&WHITE

1:50

cm47



BOTANICA DARK

1:10



BOTANICA GREY

1:10



BOTANICA MAKEUP

1:10



BOTANICA WINE

1:10

cm60

VITO
NESTA
BOTANICA

BOTANICA BLACK&WHITE
VNBOTB
BOTANICA DARK
VNBOTD

BOTANICA GREY
VNBOTG
BOTANICA MAKEUP
VNBOTM

BOTANICA WINE
VNBOTW



cm 400

CASABLANCA ANCIENT

1:50

VITO
NESTA
CASABLANCA

CASABLANCA ANCIENT
VNCASA

CASABLANCA
BLACK&WHITE
VNCASB

CASABLANCA CANVAS
VNCASC

CASABLANCA COFFEE
VNCASCO



CASABLANCA BLACK&WHITE 1:10



CASABLANCA CANVAS 1:10



CASABLANCA COFFEE 1:10

cm60

cm47

cm 400



COSTARICA DUST

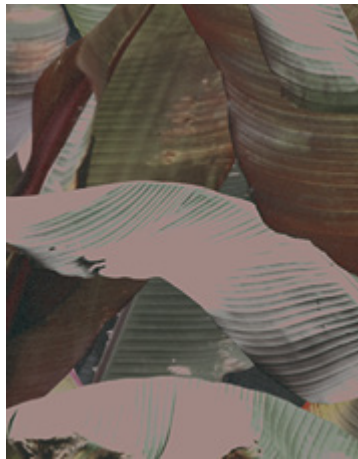
1:50

cm47



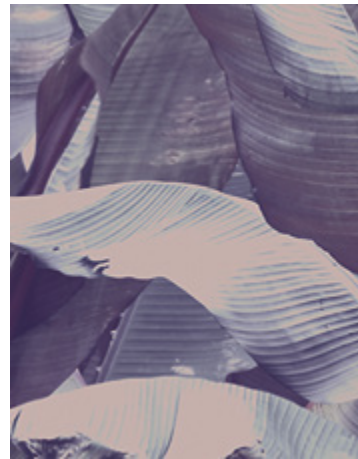
COSTARICA GREEN

1:10



COSTARICA PETROL

1:10



COSTARICA PURPLE

1:10



COSTARICA WINE

1:10

VITO
NESTA
COSTARICA

COSTARICA DUST
VNCOSD
COSTARICA GREEN
VNCOSG

COSTARICA PETROL
VNCOSP
COSTARICA PURPLE
VNCOSPU

COSTARICA WINE
VNCOSW

cm47



cm 400

VITO
NESTA
GIACARTA

GIACARTA GLOAMING
VNGIAG

GIACARTA GLOAMING

1:50

GIACARTA NIGHT
VNGIAN

GIACARTA NOON
VNGIANO

GIACARTA SUNSET
VNGIAS

cm47



GIACARTA NIGHT

1:10



GIACARTA NOON

1:10



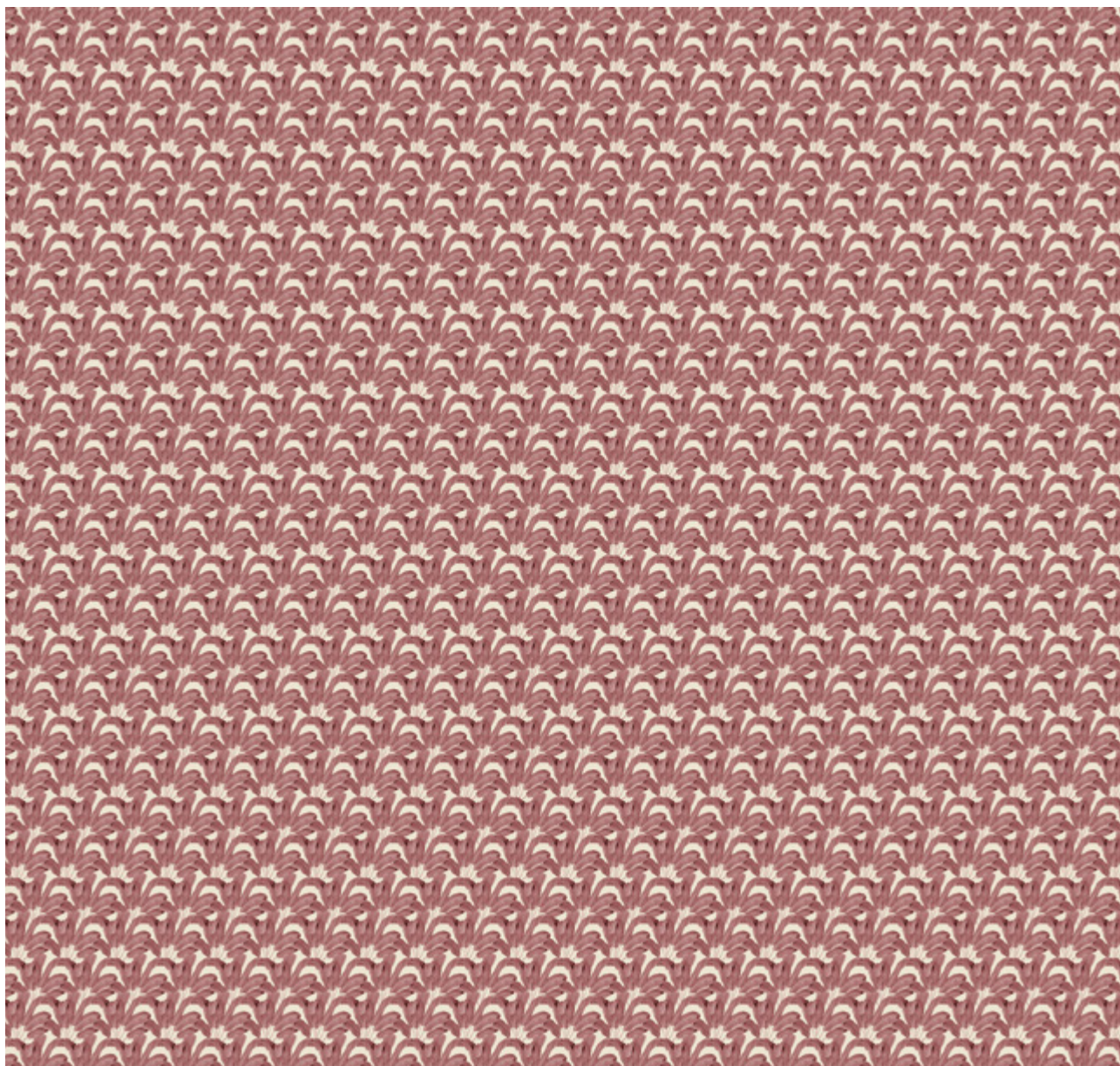
GIACARTA SUNSET

1:10

cm60

cm47

cm 400



VITO
NESTA
LEAF

LEAF RED
VNLEAR

LEAF SAGE
VNLEAS

LEAF YELLOW
VNLEAY

LEAF RED

1:50

cm47

cm60



LEAF SAGE

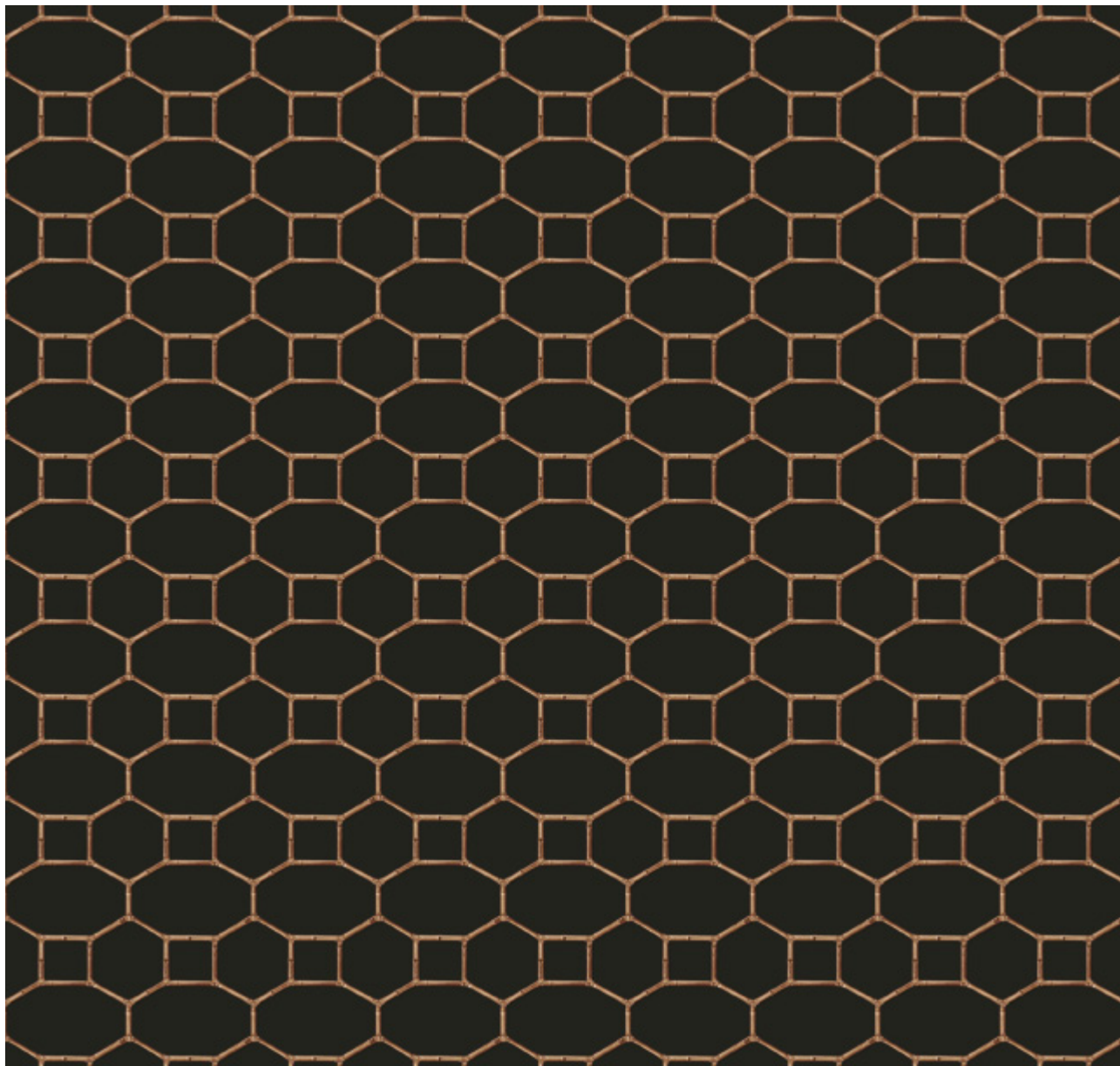
1:10



LEAF YELLOW

1:10

cm47



cm 400

BAMBOO BLACK

1:50

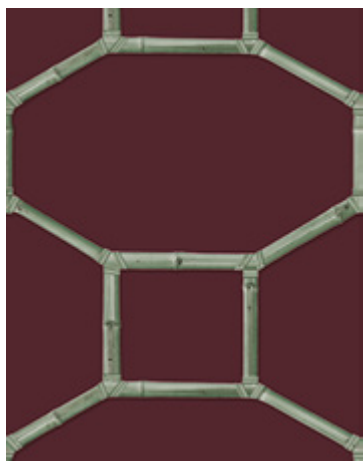
VITO
NESTA
BAMBOO

BAMBOO BLACK
VNBAMB

BAMBOO RED
VNBAMR

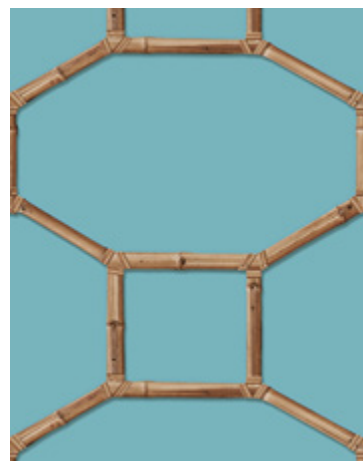
BAMBOO SKY
VNBAMS

cm47



BAMBOO RED

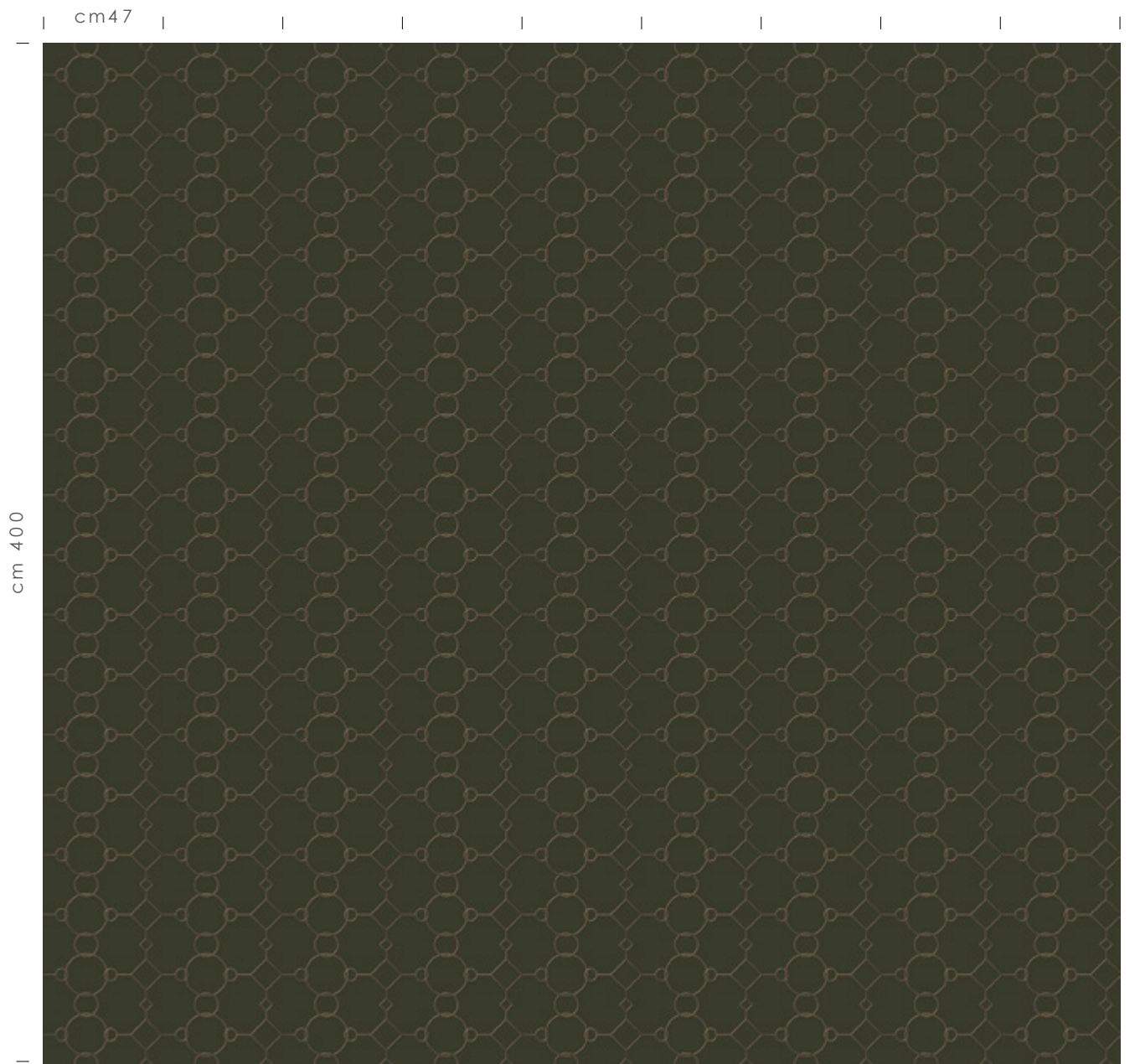
1:10



BAMBOO SKY

1:10

cm60



VITO
NESTA
CHAIN

CHAIN GREEN
VNCHAG

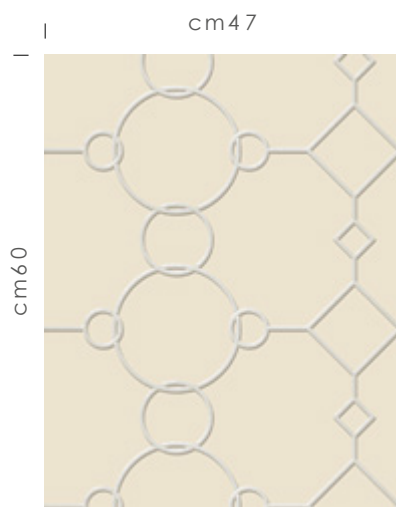
CHAIN IVORY
VNCHAI

CHAIN MUD
VNCHAM

CHAIN RED
VNCHAR

CHAIN GREEN

1:50



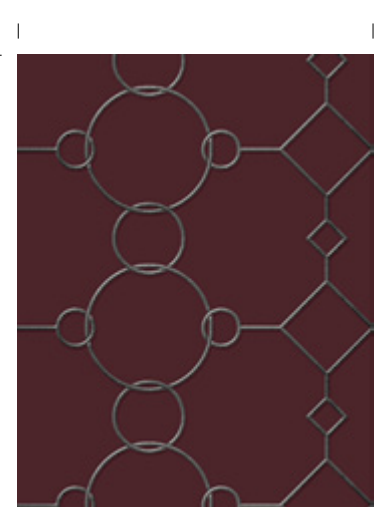
CHAIN IVORY

1:10



CHAIN MUD

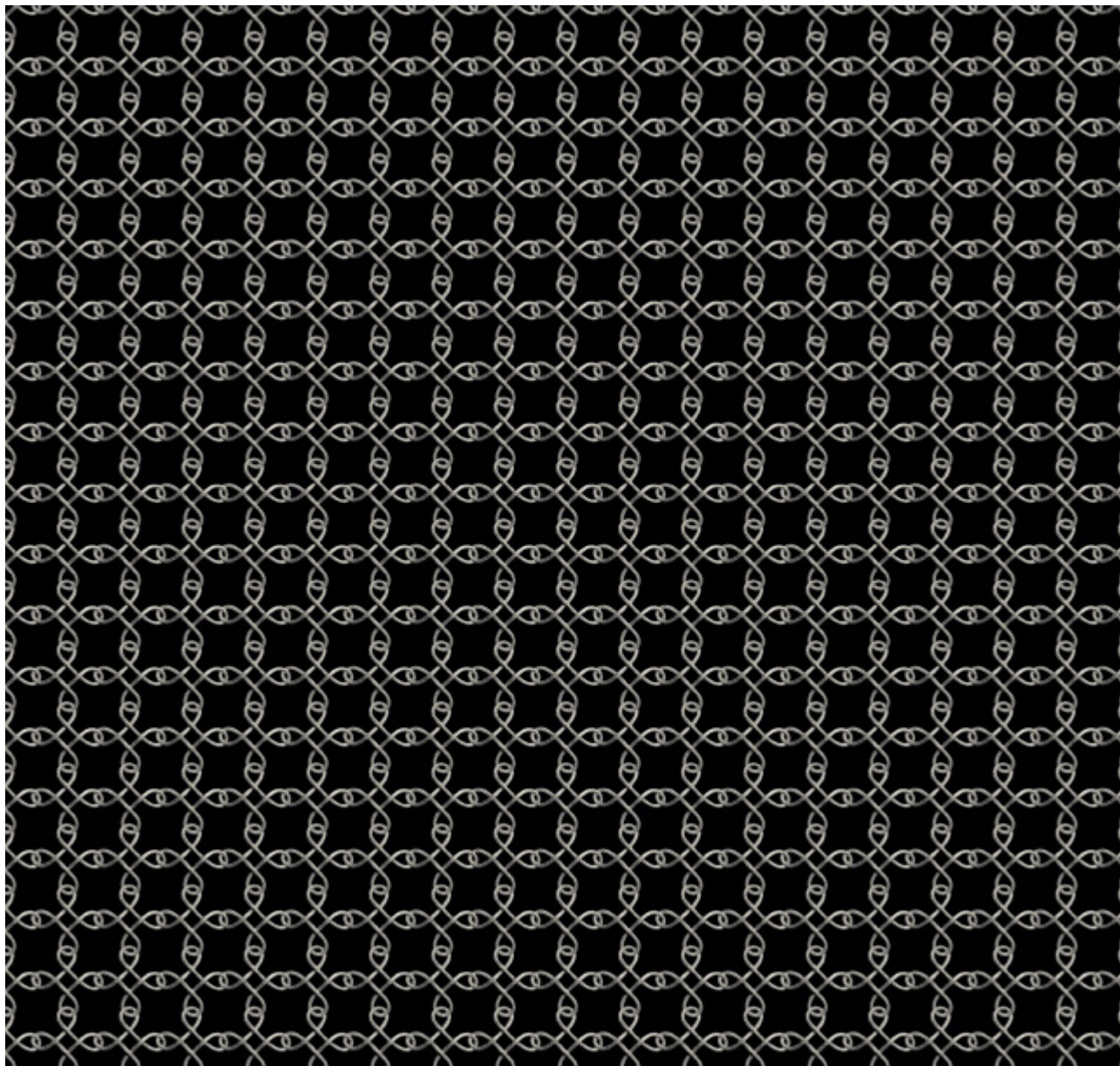
1:10



CHAIN RED

1:10

cm47



cm 400

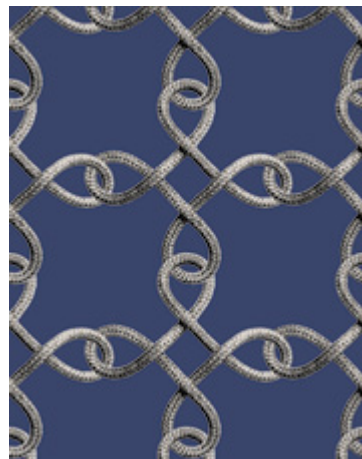
VITO
NESTA
KNOT

KNOT WHITE&BLACK
VNKNOW

KNOT WHITE&BLACK

1:50

cm47



cm60

KNOT CREAM
VNKNOC

KNOT RED
VNKNOR

KNOT BLUE
VNKNOB

KNOT CREAM

1:10

KNOT RED

1:10

KNOT BLUE

1:10

cm47

cm 400



VITO
NESTA
NAPPINE

NAPPINE GOLD
VNNAPG

NAPPINE GREEN
VNNAPGR

NAPPINE RED
VNNAPR

NAPPINE GOLD

1:50

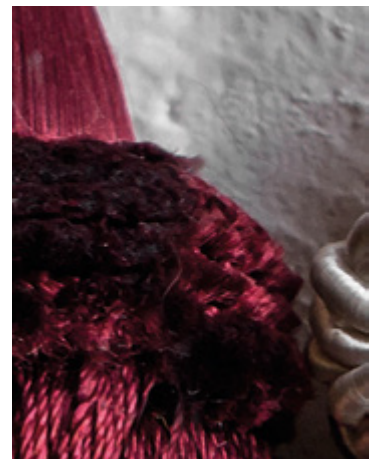
cm47



cm60

NAPPINE GREEN

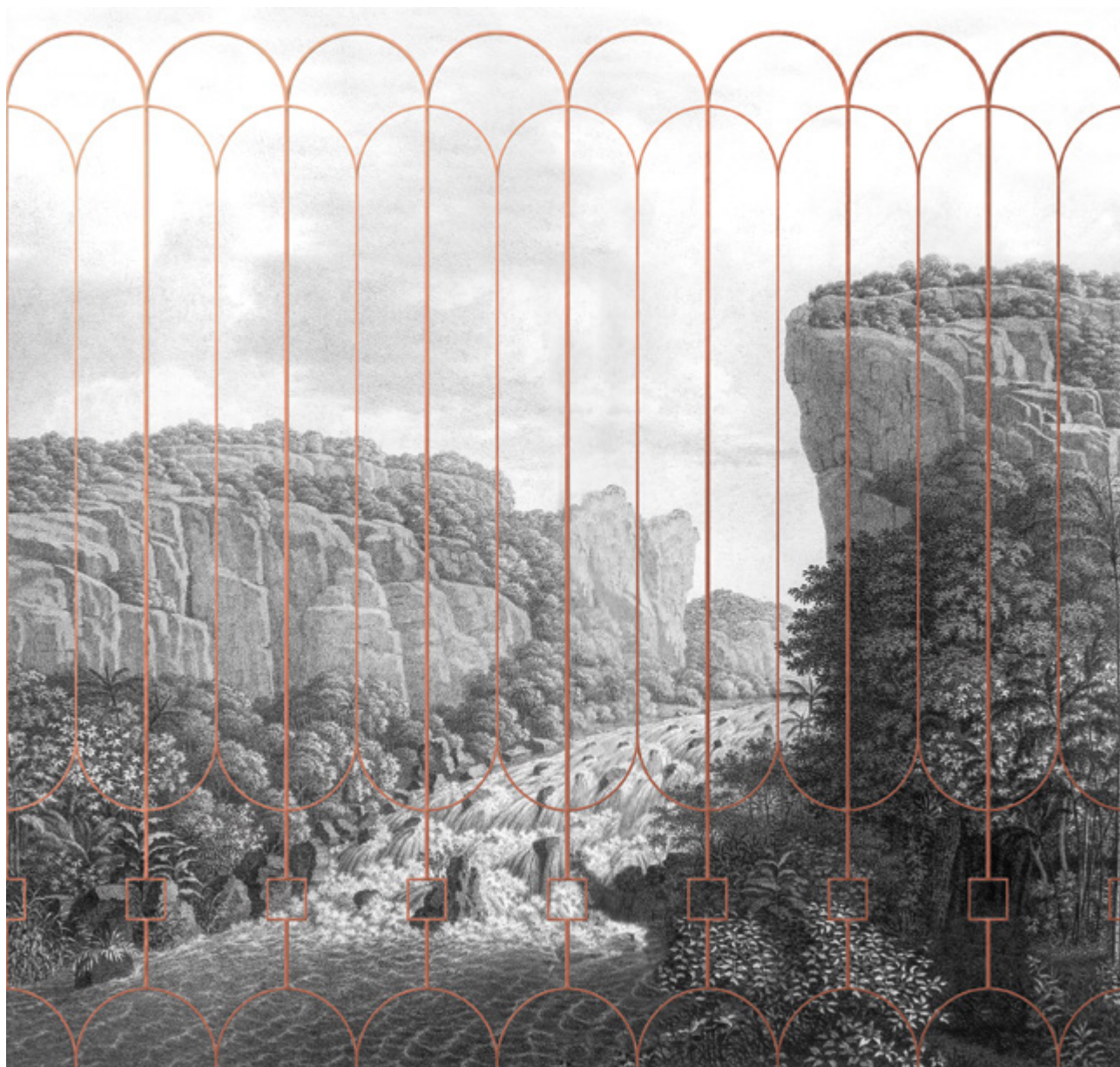
1:10



NAPPINE RED

1:10

cm47



cm 400

RIO COPPER

1:50

VITO
NESTA
RIO

RIO COPPER
VNRIOC

RIO GOLD
VNRIOG

RIO SEPPIA
VNRIOS

cm47



RIO GOLD

1:10



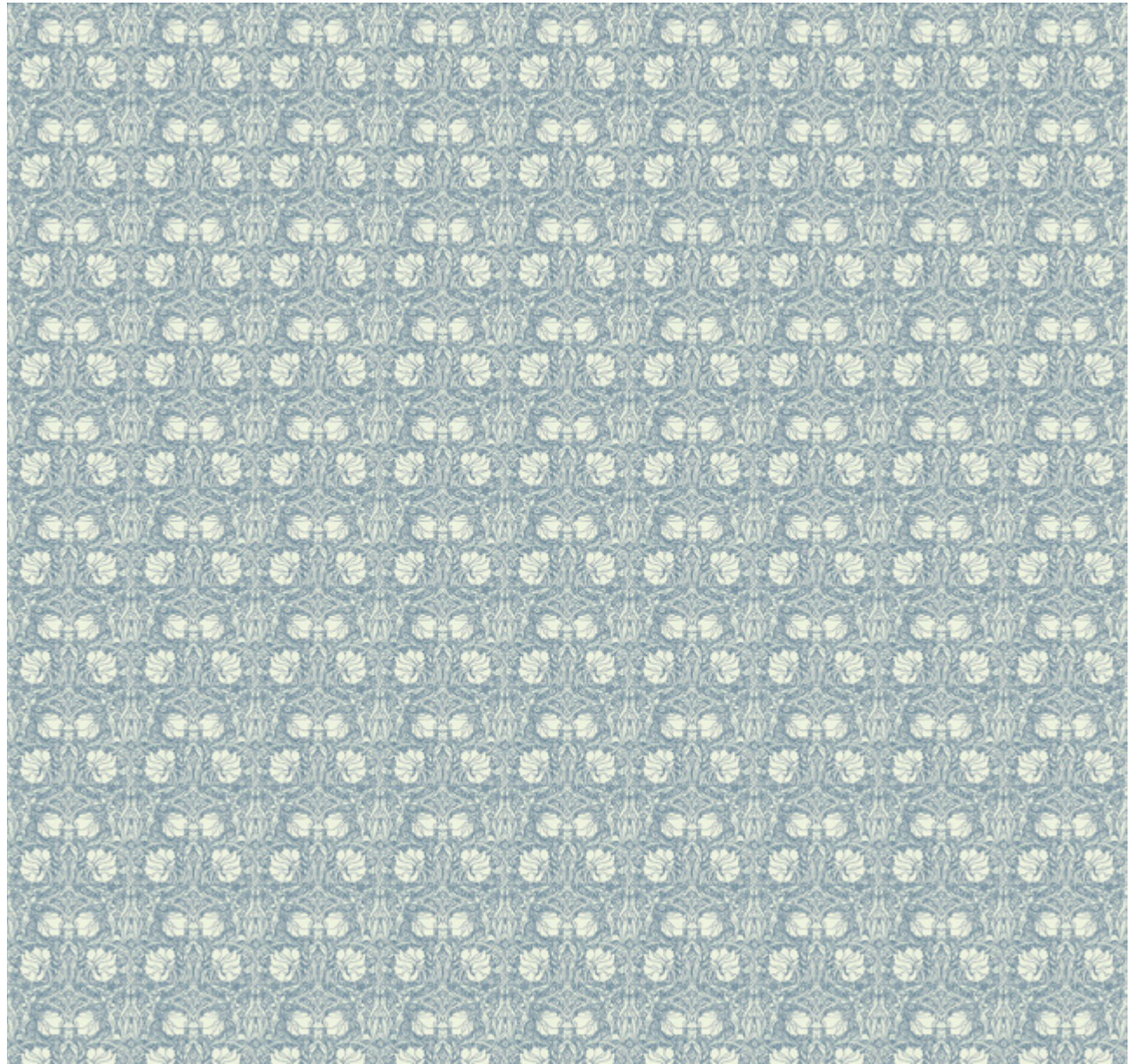
RIO SEPPIA

1:10

cm60

cm47

cm 400



VITO
 NESTA
 VANDEVELDE

VANDEVELDE COLD
 VNVANC

VANDEVELDE ECRU
 VNVANE

VANDEVELDE RED
 VNVANR

VANDEVELDE COLD

1:50

cm47



cm60

VANDEVELDE ECRU

1:10



VANDEVELDE RED

1:10

cm47



cm 400

VERSACRUM COFFEE

1:50

VITO
NESTA
VERSACRUM

VERSACRUM COFFEE
VNVERC

VERSACRUM ICE
VNVERI

VERSACRUM SUMMER
VNVERS

cm47



VERSACRUM ICE

1:10



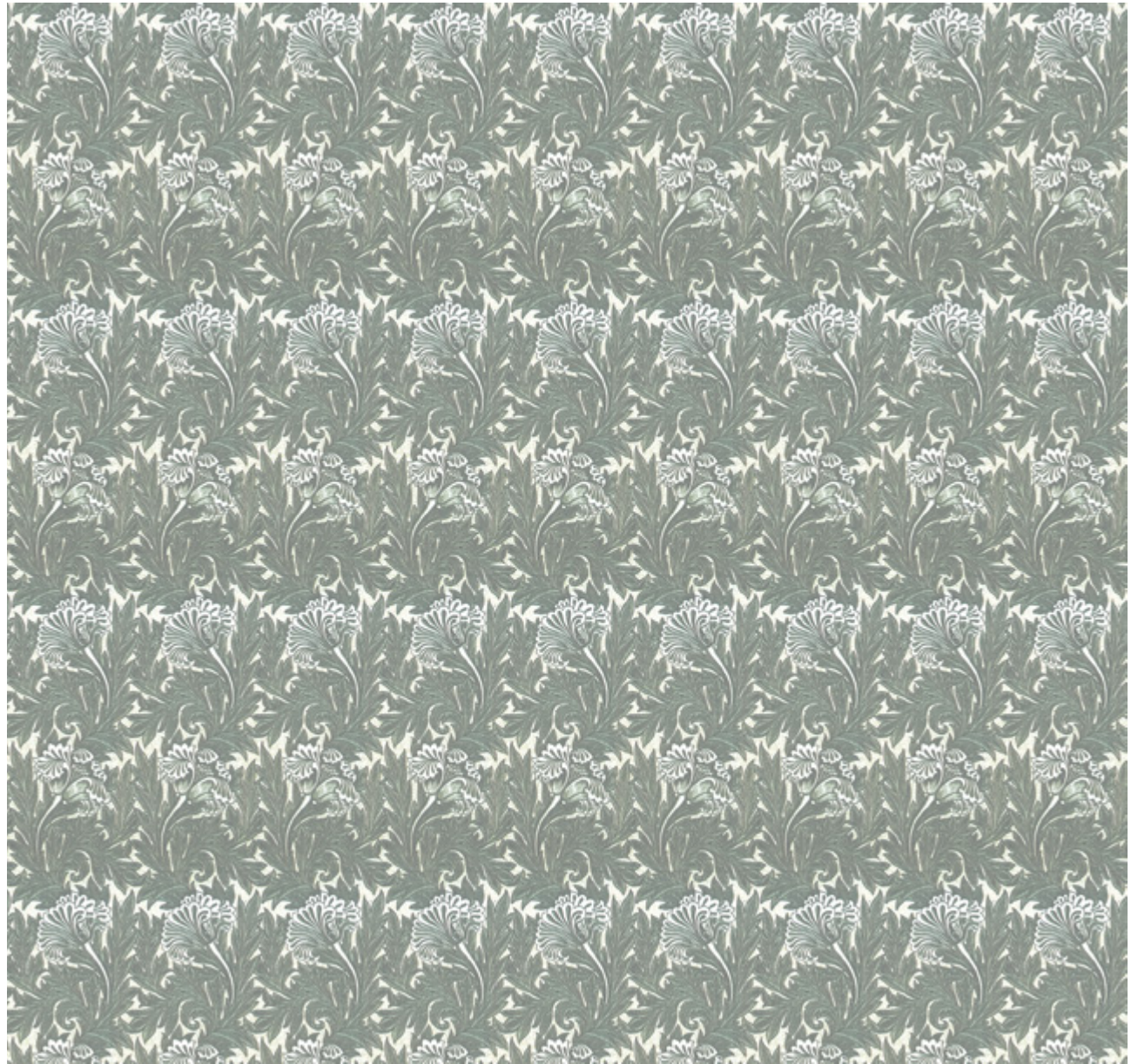
VERSACRUM SUMMER

1:10

cm60

cm47

cm 400



WAGNER DUST

1:50

VITO
NESTA
WAGNER

WAGNER DUST
VNWAGD

WAGNER ICE
VNWAGI

WAGNER SOFT
VNWAGS

cm47

cm60



WAGNER ICE

1:10



WAGNER SOFT

1:10

LISTINO PREZZI

Prezzo wallpaper collection: P. 2.3570 SqM
Prezzo campionario wallpaper collection [23x30cm]: P. 5.0000

Contacts:

trade@devon-devon.com

office@devon-devon.com

Le condizioni generali di vendita sono riportate nel Catalogo/Listino Generale 2017 Devon&Devon o sono consultabili su www.devon-devon.com all'interno dei singoli cataloghi.

www.devon-devon.com

PRICE LIST

Retail price wallpaper collection: P. 2.3570 SqM

Net price wallpaper collection sample [23x30cm]: P. 5.0000

Contacts:

trade@devon-devon.com

office@devon-devon.com

The general sales conditions can be found in the Devon&Devon 2017 Catalogue/Price List or can be consulted on line at www.devon-devon.com within the single catalogues.

www.devon-devon.com

CARATTERISTICHE TECNICHE GENERALI

Devon&Devon Wallpaper Collection è un prodotto di alta qualità che non rinuncia al rispetto per la natura, con l'obiettivo del minor impatto ambientale possibile.

La carta da parati viene stampata sulla parte superiore del supporto in vinile e sul retro di un foglio TNT 350g, che garantisce elevata stabilità in fase di applicazione e rimozione. La carta è facilmente lavabile con un panno umido (ma evitare qualunque prodotto abrasivo), ignifuga, non si restringe, non si deforma e non si strappa quando si incolla. Non contiene composti di metalli pesanti. È conforme alla norma su permeabilità e vapore acqueo e appartiene alla classe antincendio B-s2,d0.

Le carte da parati Devon&Devon vengono tagliate utilizzando macchinari di precisione garantiti da brevetti internazionali. Il cutter dispone di un taglio verticale perfetto che segue l'immagine con una precisione di 0,06mm (0,002 in) ideale per il taglio delle immagini applicate in successione.

La larghezza di ogni telo misura in larghezza cm 47.

Gli inchiostri possiedono certificati di eccellenza che garantiscono il massimo rispetto dell'ambiente, la certa provenienza delle materie prime e la sicurezza dell'utilizzo per preservare la salute. Sono a base di acqua, completamente inodori e adatti ad ogni ambiente. Non sono infiammabili, non combustibili e sono privi di nichel.

L'alta qualità è ideale per coperture di grandi e piccole dimensioni.

Non richiedono etichette di pericolo secondo la direttiva UE 1999/45CE.

ORDINI

Assistiamo il cliente durante la fase di progettazione e realizzazione dei propri ambienti. Le carte da parati si ordinano inviando il rilievo metrico delle pareti da rivestire. Sarà nostra cura restituire al cliente una proposta grafica e relativo preventivo di spesa. È fondamentale che le misure delle pareti siano chiare e precise.

In presenza di porte di grande formato o portefinestre, non verrà computata la parte centrale interna a queste. Le finestre invece seguono il principio del vuoto per pieno, per cui verranno stampate per intero per dare continuità nella parte sopra e sotto.

CONSIGLI DI POSA E AVVERTENZE

Le carte da parati Devon&Devon si posano su ogni tipo di superficie purché prive di qualunque imperfezione strutturale.

Per facilitare la comprensione del disegno in fase di posa, i pannelli vengono forniti numerati. La colla universale per i parati viene fornita gratuitamente in quantità necessaria. Ogni posatore predilige un tipo di colla diversa, conseguentemente è importante prendere accordi preventivi. Raccomandiamo di rivolgersi a personale altamente qualificato e specializzato.

L'uso della carta da parati è possibile anche all'interno della stanza da bagno, ma con alcuni accorgimenti: negli ambienti doccia è assolutamente sconsigliato, mentre in altre pareti del bagno raccomandiamo a fine posa di cerare con "Cera trasparente per stucco veneziano" tipo Saratoga, applicata sui parati con panno di lana: consente di proteggere i parati da eccessi di vapore presenti nella stanza.

Raccomandiamo inoltre, prima della posa, di controllare attentamente il materiale ricevuto con la spedizione dell'ordine: non saranno infatti accettate contestazioni di sorta a materiale posato.

GENERAL TECHNICAL SPECIFICATIONS

Devon&Devon Wallpaper Collection is a high-quality, environmentally-friendly product designed to have the lowest environmental impact possible.

The wallpaper is printed on the top of the vinyl base and on the back of a 350g non-woven (TNT) sheet, which guarantees high stability during application and removal. The paper can be cleaned easily with a damp cloth (but avoid any kind of abrasive products), is flame-retardant, does not shrink or distort and does not tear when glued. It contains no heavy metal compounds. It complies with regulations relating to permeability and water vapour and belongs to fire class rating B-s2,d0.

Devon&Devon wallpaper is cut using precision machinery covered by international patents. The cutter gives a perfect vertical cut, which follows the image with a precision of 0.06mm (0.002 in), ideal for cutting images applied consecutively.

The width of each panel is 47 cm.

The inks possess certificates of excellence which guarantees the utmost respect for the environment, as well as guaranteed the origin of the raw materials and the safety of the product when being used. They contain water, are completely odourless and are suitable for any room. They are unflammable, non-combustible and nickel free. Thanks to their high quality, they are ideal for covering small and large areas. They do not require hazard labels as per the EU 1999/45EC directive.

ORDERS

We assist our clients throughout the process of designing and creating the ambience in which the wallpaper is to be used.

The wallpaper should be ordered by sending the metric survey of the walls to be covered. We will then send the client a graphic proposal and related cost estimate.

It is essential that the wall measurements are clear and precise.

In the case of large doors their internal central part will be not take into consideration for the graphics nor the order. Windows instead follow the total volume (inclusive of dead freight) principle, and will therefore be printed in their entirety to ensure the continuity of the design in the parts above and below.

RECOMMENDATIONS AND INSTRUCTIONS

Devon&Devon wallpaper can be applied to all types of surface, as long as they contain no structural imperfections.

To make the installation easier to understand during the setting up/laying stage, the panels supplied are numbered.

All-purpose wallpaper adhesive is supplied free of charge in the quantity required.

Since each installer has different preferences for the adhesive to use whilst wallpapering, it is important to reach a prior agreement with the installer.

We recommend employing highly qualified, specialized professionals. The wallpaper can also be used inside bathrooms, but with certain precautions: it is absolutely not recommended in shower areas, while on other bathroom walls we recommend finishing by applying 'Transparent wax for Venetian stucco' (e.g. by Saratoga) to the wall using a woolen cloth: this helps protect the wallpaper from any excess steam in the room.

Before the installation, we strongly recommend to check the goods received once the order has been delivered; we cannot accept any claims once the materials have been installed to the walls.

Devon & Devon

CREATED IN FLORENCE. INSPIRED BY THE WORLD.

DEVON-DEVON.COM
