

JAKOB SCHLAEPFER

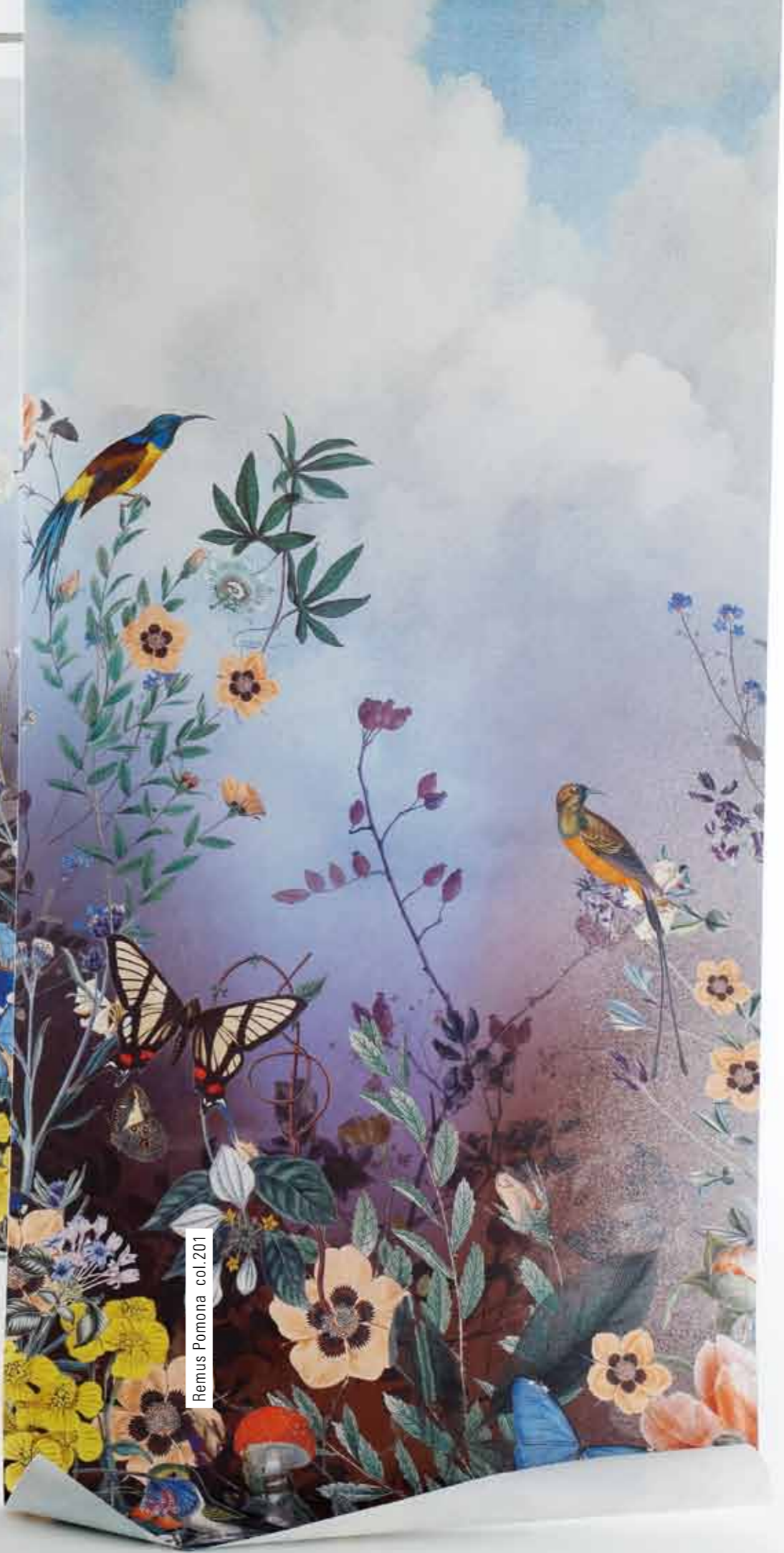


Jakob Schlaepfer was established in 1904. The company still keeps surprising the design industry with unique and innovative textiles as well as setting trends by following its own creative instincts.

The Swiss company skilfully combines industrial manufacturing with hand finishing to produce the finest textiles for fashion and interior, where every creation redefines luxury.



Remus Petunia col.201



Remus Pomona col.201

Evaliia col.102



Evaliia col.101

Evaliia col.103

Baja col.101

Venice col.101



Glinka Guel col.201



Glinka Güel col.201



Glinka Giardino col.201



Glinka Meissen col.201



Glinka Cixi col.201



Glinka Orchid col.201





Malevich col.201



Cotton Club col.101

Vajja Print col.201

Vajja Print col.202



Hortensia col.201



Grace col.103



Pizzogrande col.101



Secretgarden col.201



Olga col.201



Maksim Legno col.101

Maksim Versailles col.101

Maksim Bouquet col.101



Phantom col.102



Nice col.101



Boston col.103



Comet col.102



Gallina col.102

Gallina col.101



Vada Pleats col.201



Buonanotte Serge col.201

Vada Serge col.201



Meta col.202

Meta col.204

Meta col.103

Meta col.203

Meta col.201

Meta col.208

Meta col.207

Meta col.205

Meta col.209

Meta col.206

Meta col.102

Meta col.101





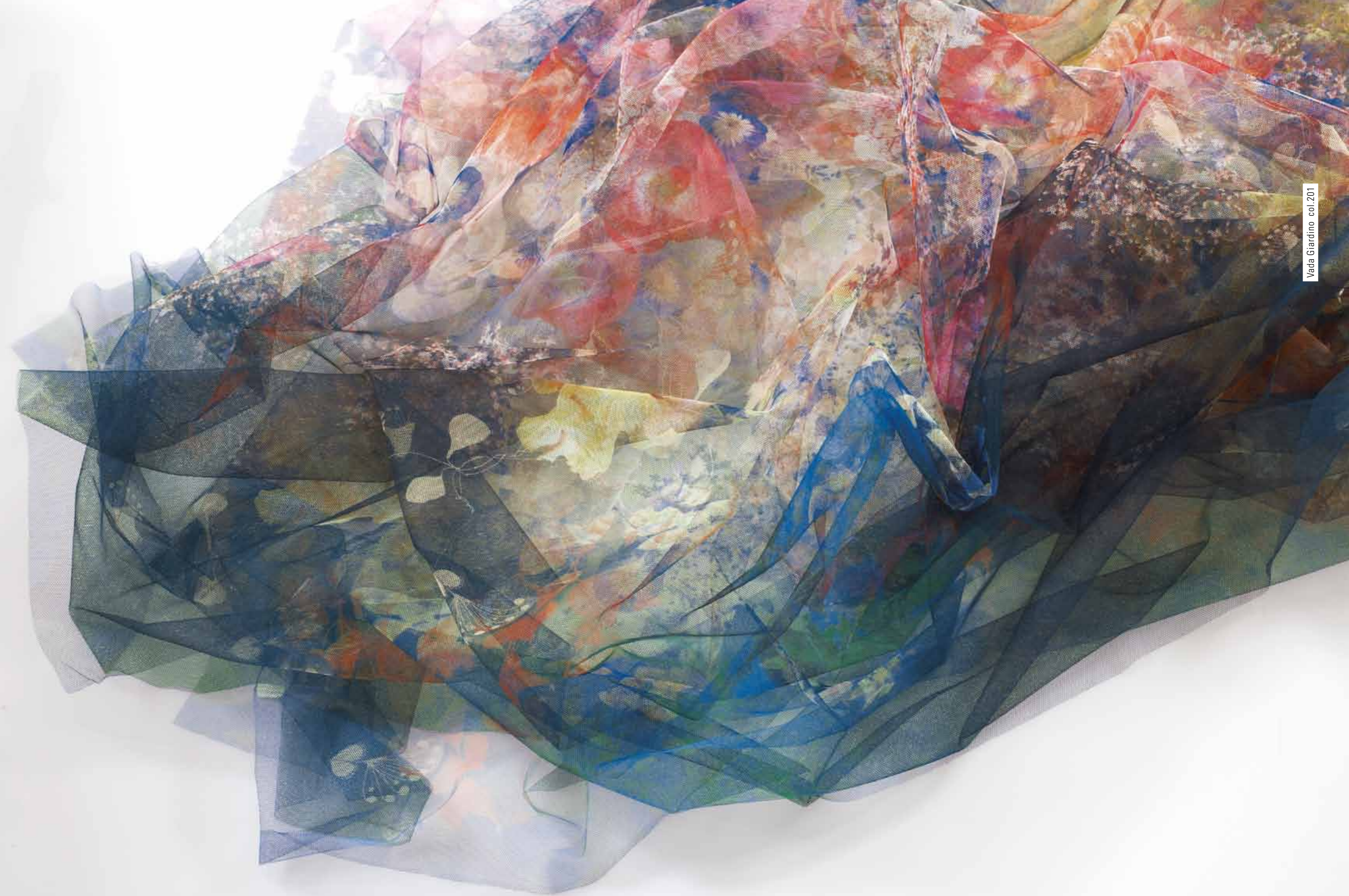
Lara Cixi col.201

Lara Meissen col.201



Lara Meissen col.201

Lara Cixi col.201





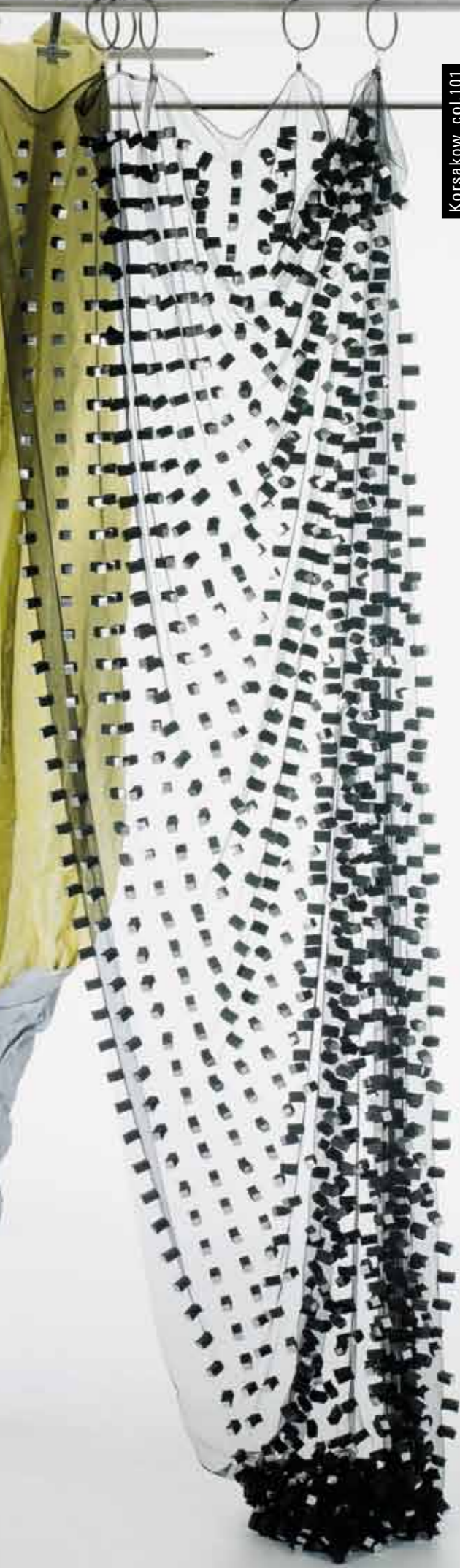
Poppy Lee col.201



Rimski col.105



Rimski col.101



Korsakow col.101



Glinka Albus col.201



Luna col.101



Lara Arabella col.201

Poppy Arabella col.201



Bojan col.101

Bojan col.102

Bojan col.201

Amurpaille col.201

Amur col.201

Igor Giardino col.201

Igor Flores col.201

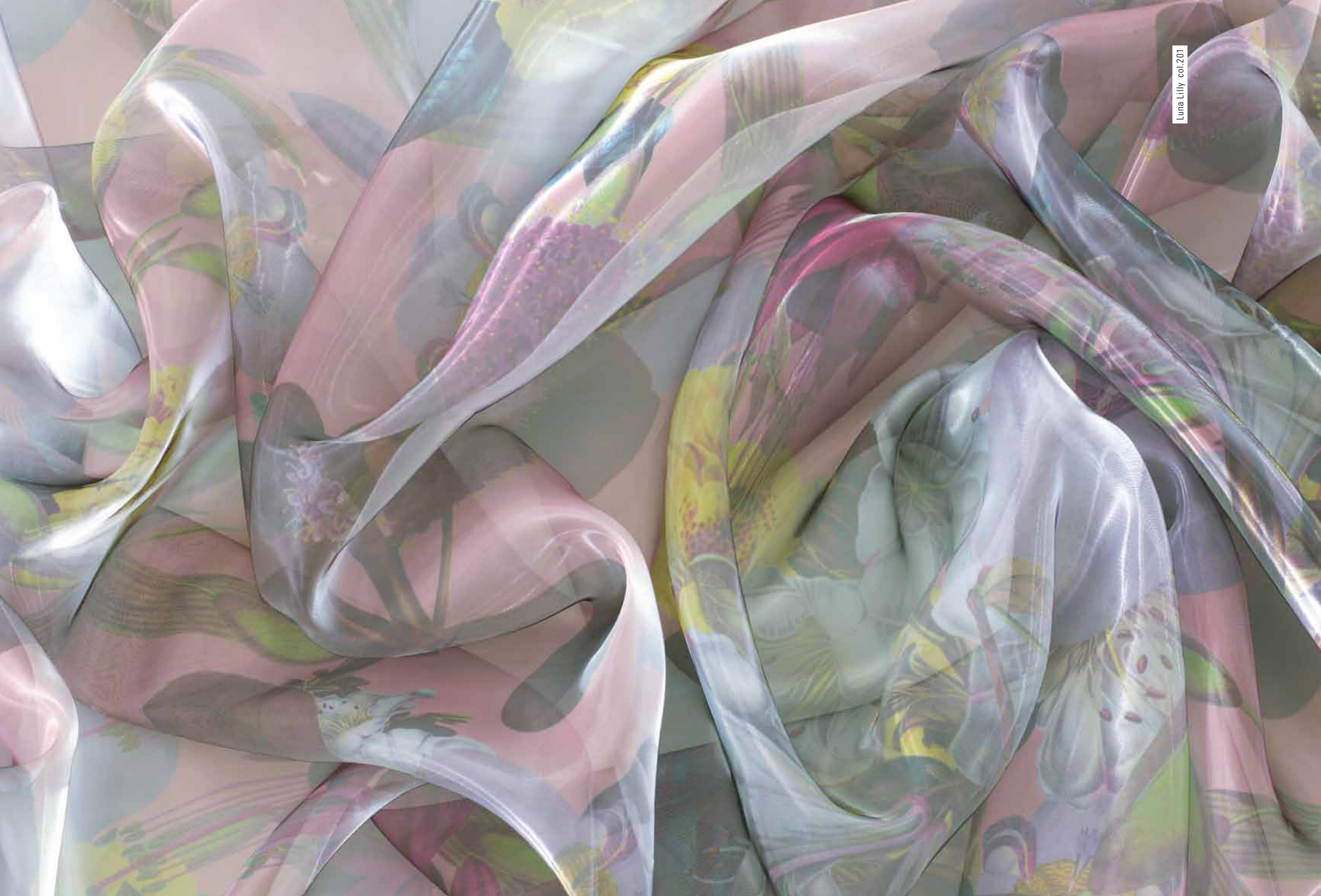
Olya Orchid col.201



Sirius Gianni col.201



Luna Ginny col.201



Quirell col.201

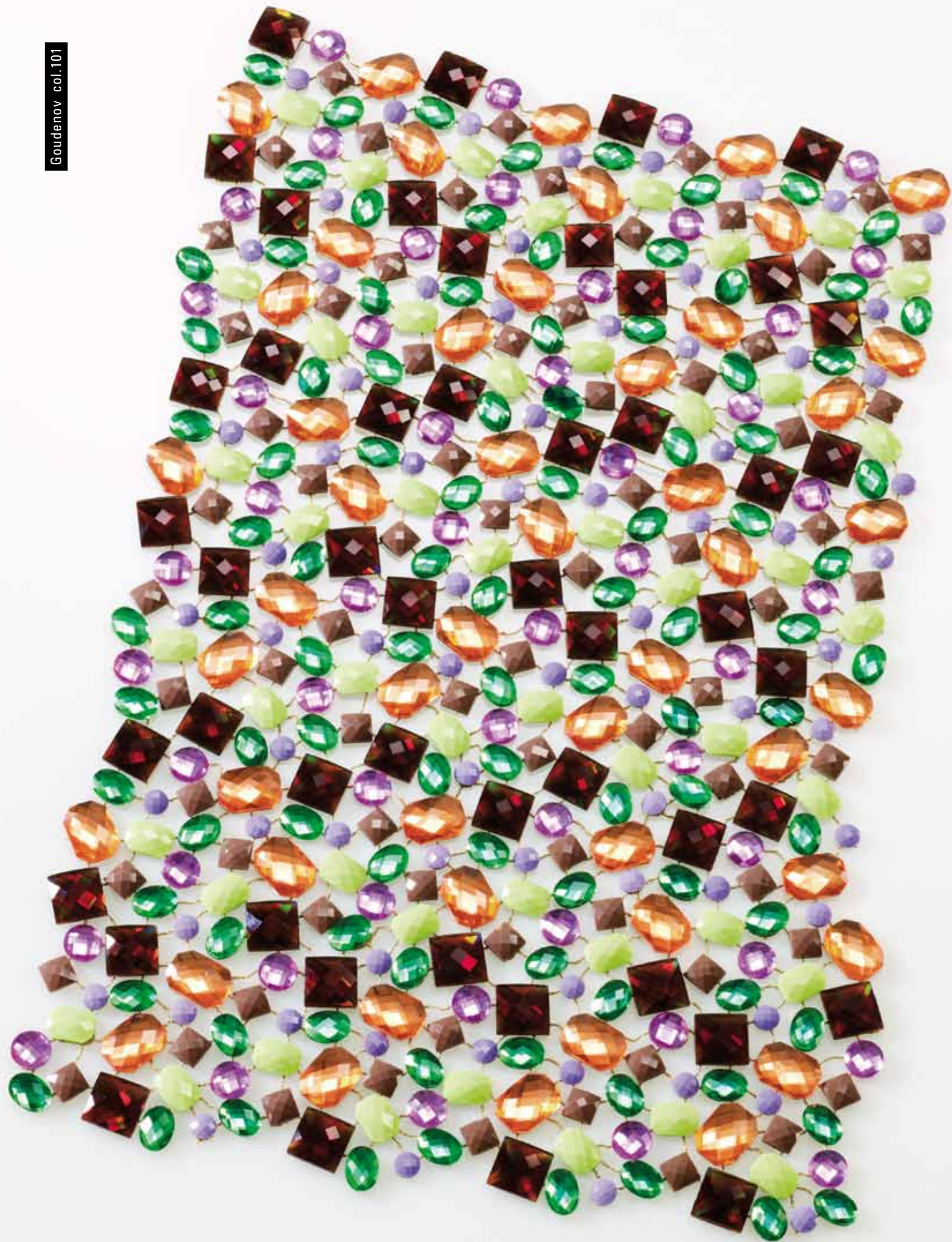


Sirius Fleur col.201



Salazar col.101





Jakob Schlaepfer
Fürstenlandstrasse 99
CH-9001 St.Gallen
T +41 71 274 92 92
F +41 71 274 92 90
bird@jakobschlaepfer.com
www.jakobschlaepfer.com



Poppy Lee col.201